



Lancaster Terrace, W2

£1,846 Per week

Introducing a newly refurbished, stunning property in Maitland court. Situated on the fifth floor, with lift access. Provides beautiful, scenic views of the surrounding area. This includes an impressive view of Hyde park from the properties private balcony. Whilst Inviting lots of daylight into the rooms.

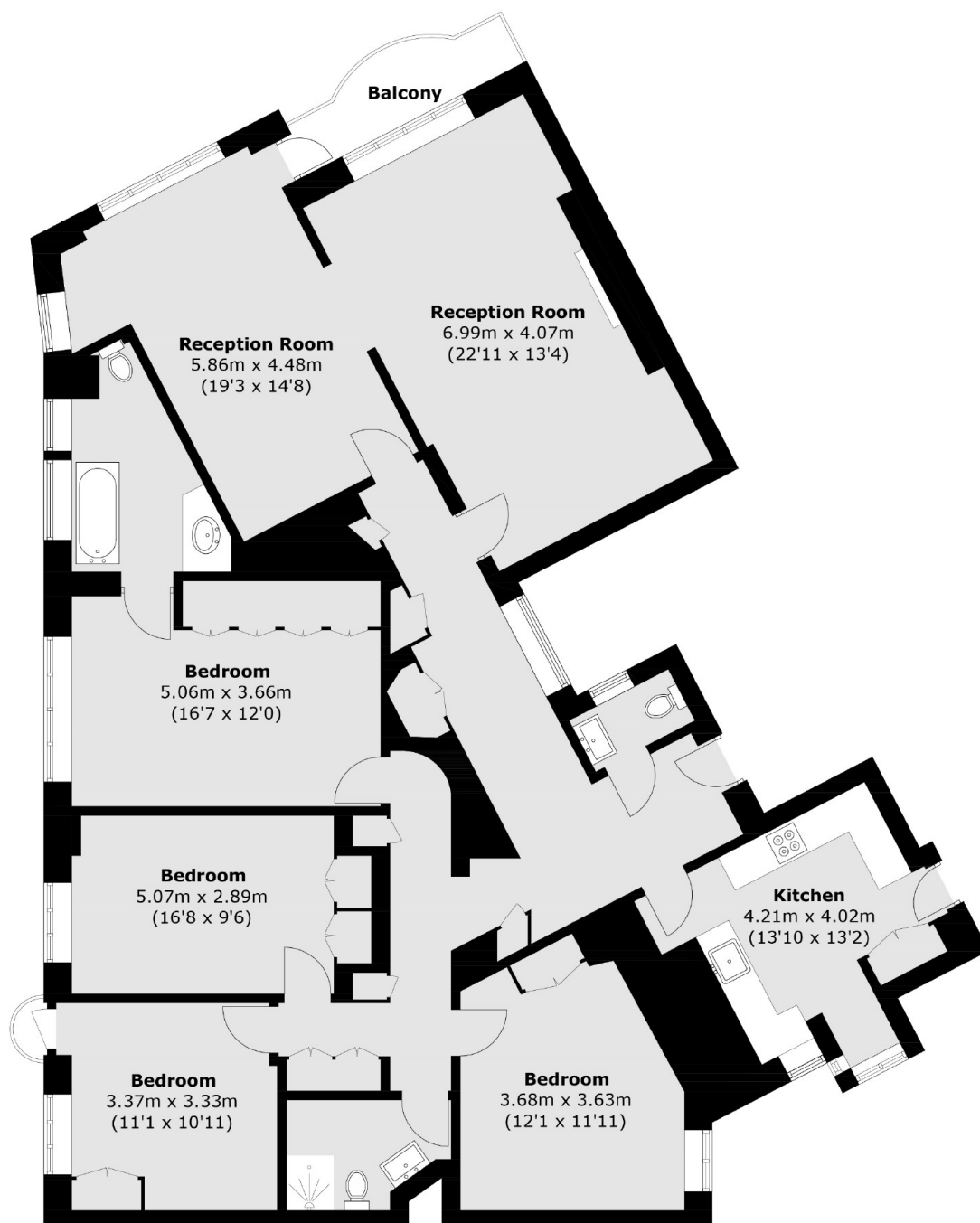
This property offers a bright a spacious living space with wooden floors through out. And consisting of four double bedrooms, there is plenty of storage and potential for a working space. You can also enjoy this flat with the added security of a on site porter.

On the doorstep of Hyde Park, the nearest station is Lancaster Gate and Paddington Station and the Heathrow Express is close by.

Features

- Four Double Bedroom
- New Refurbishment
- Modern
- Spacious
- Wooden Floors
- Lift Access
- Porter

Lancaster Terrace, London, W2



Total area (approx.): 172.3 sq. m (1,854.6 sq. ft)
Balcony area (approx.): 3.9 sq. m (42.0 sq. ft)

Dexters

Hyde Park and Bayswater
4-5 Spring Street
London
W2 3RA
Lettings
020 7298 1560

Energy Rating: - We aim to make our particulars both accurate and reliable. However they are not guaranteed; nor do they form part of an offer or contract. If you require clarification on any points then please contact us, especially if you're traveling some distance to view. Please note that appliances and heating systems have not been tested and therefore no warranties can be given as to their good working order.

 **RICS** Regulated
Estate Agent
and Letting Agent

dexters.co.uk