

## Gloucester Terrace, W2

£275 Per week

A large and newly refurbished studio apartment with its own private entrance, close to Hyde Park and local transport. The property has wooden floors, additional storage and a modern, tiled bathroom with shower over bath.

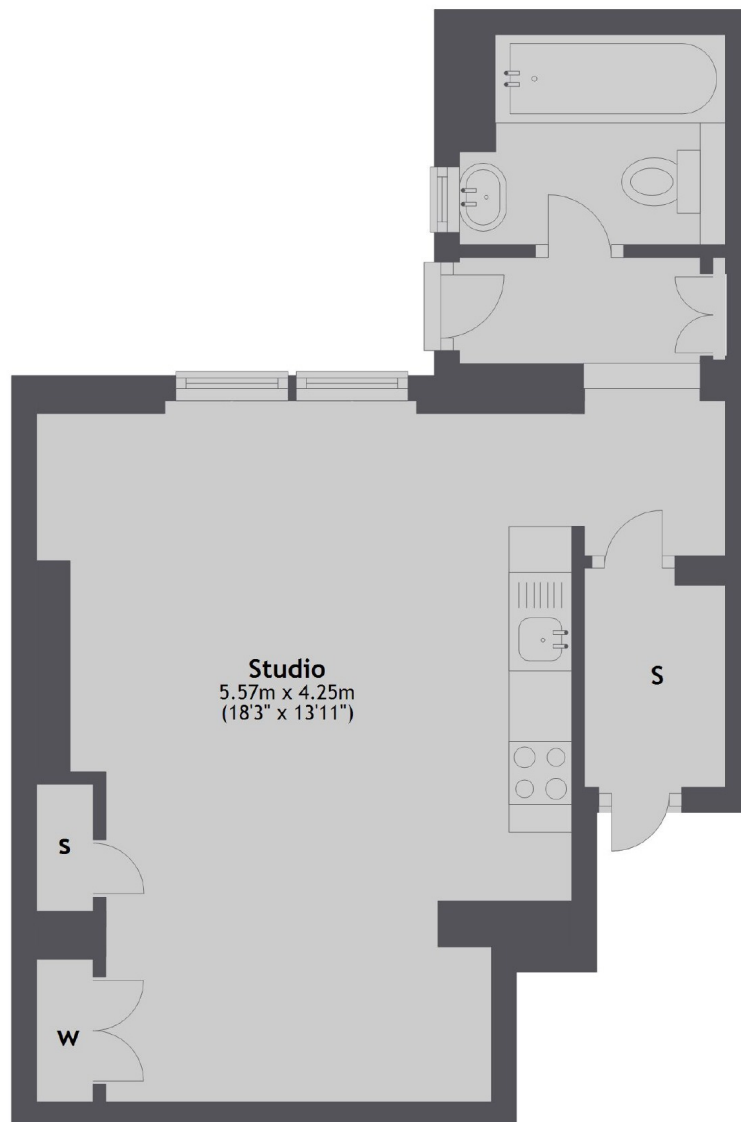
Close to Paddington station and Royal Oak, the property also has easy access to the A40 for motorists.

### Features

Studio  
Modern  
Newly Refurbished  
Storage  
Wooden Floors  
Private Entrance

Gloucester Terrace,  
London, W2

## Ground Floor



Total area: approx. 33.4 sq. metres (359.8 sq. feet)

### Contact

To arrange a viewing call our office on the number below or visit our website.



Energy Rating: E. We aim to make our particulars both accurate and reliable. However they are not guaranteed; nor do they form part of an offer or contract. If you require clarification on any points then please contact us, especially if you're traveling some distance to view. Please note that appliances and heating systems have not been tested and therefore no warranties can be given as to their good working order.