



Merchant Square East, W2

£850 Per week

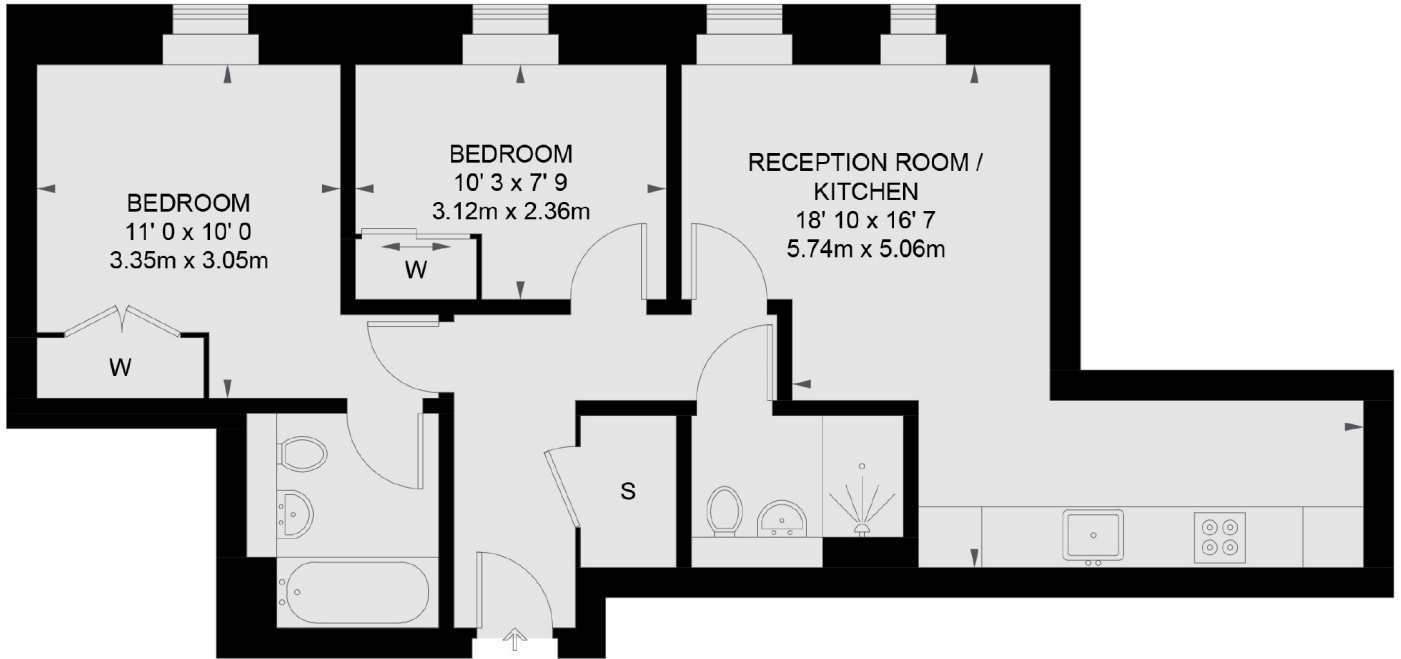
A two bedroom, two bathroom apartment on the second floor of a portered building with lift access. Close to local shops and restaurants, the property has a galley kitchen, built in storage and wooden flooring throughout.

Set in the Paddington Basin, this apartment has access to transport links such as Paddington Train Station and Edgware Road.

Features

- Two Bed
- Two Bath
- Wooden Flooring
- Furnished
- Porter
- Lift

Merchant Square East, London, W2



SECOND FLOOR

TOTAL APPROX. FLOOR AREA 594 SQ. FT. (55.2 SQ. M.)