



Westbourne Terrace, W2 £450,000

A one bedroom apartment in a white stucco fronted Victorian conversion. The property has a spacious open plan reception, with a fitted modern kitchen and room to dine, a double bedroom, its' own front door and two demised vaults for storage.

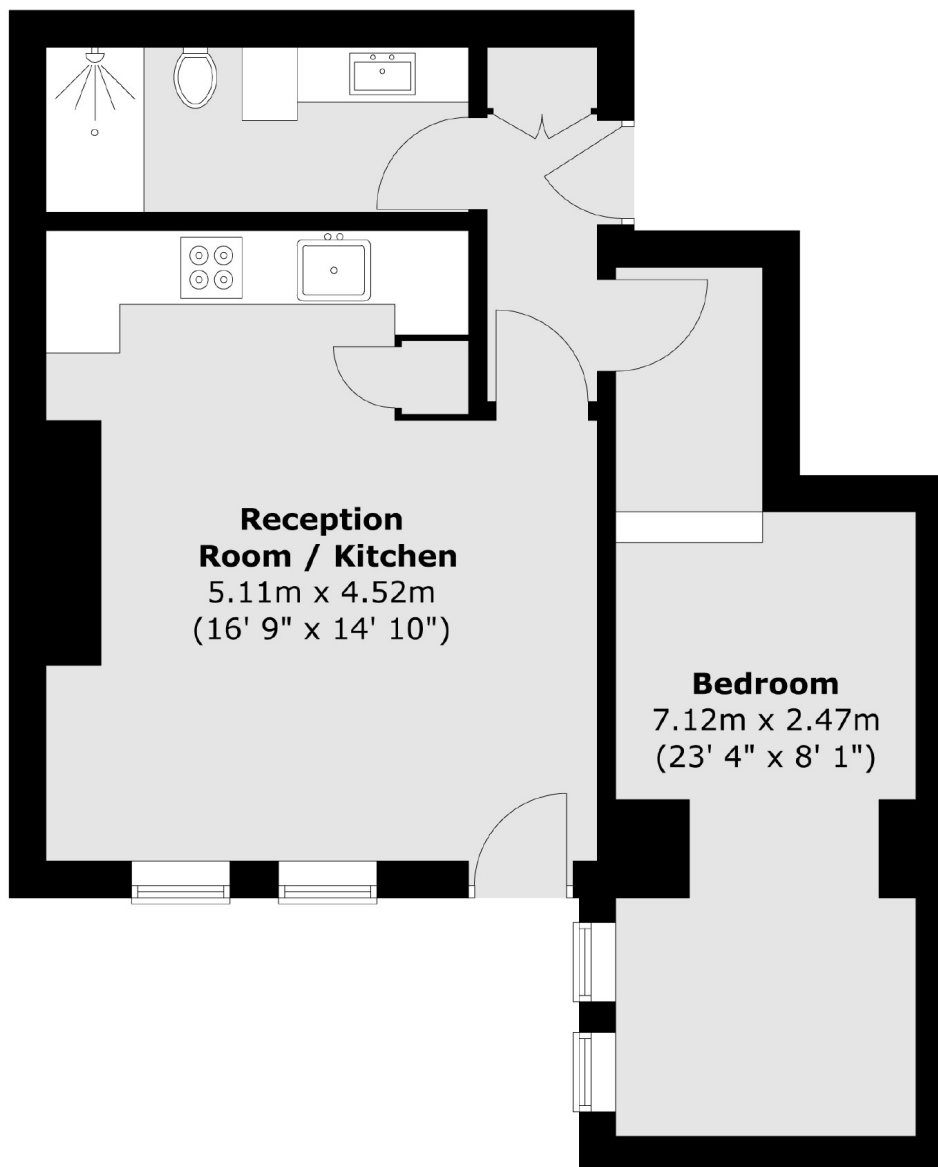
Westbourne Terrace is conveniently located within close proximity to Paddington, Lancaster Gate and Bayswater stations. The property is only moments from the green spaces of Hyde Park and Kensington Gardens.

Features

- One Bedroom
- Open Plan
- Own Front Door
- Two Demised Vaults
- White Stucco Fronted
- Close To Paddington

Westbourne Terrace,
London, W2

Lower Ground Floor



Total area (approx.) : 45.9 sq. m (494 sq. ft)