



Cambridge Square, W2

£550,000

A one bedroom apartment on the tenth floor (with lift) of a purpose built portered block with access to the communal gardens, The property has an open plan reception with fitted kitchen and room to dine, built in storage, and views across London.

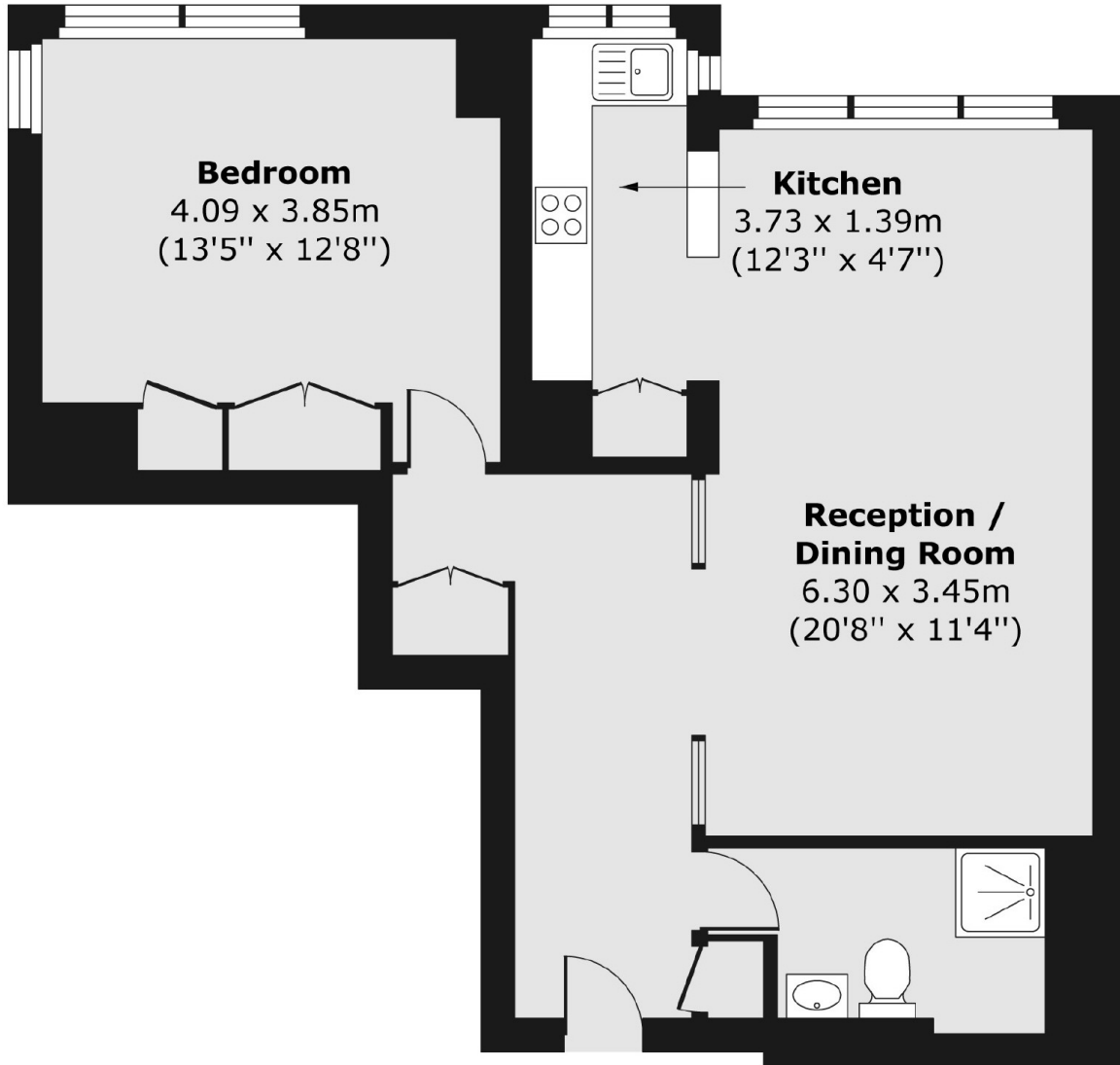
Near to Connaught Village and Hyde Park and moments from Paddington Basin, the nearest tubes are Edgware Road and Paddington Station.

Features

- One Bedroom
- Portered Block
- Communal Gardens
- Open Plan Reception
- Off Street Parking
- Lift

Cambridge Square,
London, W2

Tenth Floor



Total area (approx.) 59.50 sq. m (640 sq. ft)