



Hallfield Estate, W2

£475,000

A two bedroom apartment in a purpose built block. The property has a spacious reception with views to the West, a large eat in separate kitchen, built in storage, wooden flooring and large windows throughout.

Hallfield Estate is ideally situated within easy reach of a variety of amenities and transport links including, Queensway, Paddington and Westbourne Grove.

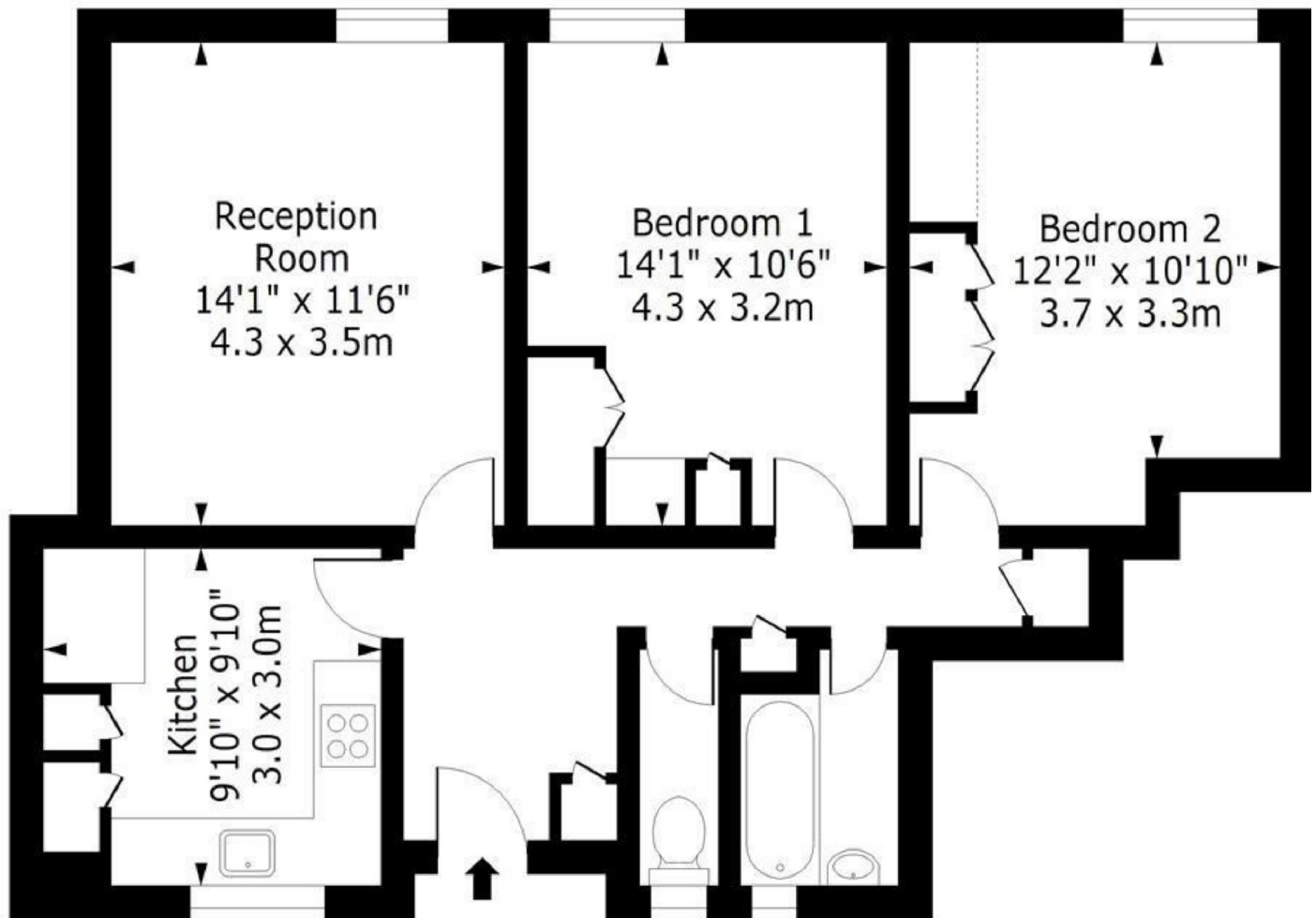
Features

- Two Bedroom
- Separate Kitchen
- Wooden Flooring
- Lift
- Hyde Park

Hallfield Estate,
London, W2

Winchester House, W2

Approx. Gross Internal Area 741 Sq Ft - 68.84 Sq M



Third Floor

Floor Area 741 Sq Ft - 68.84 Sq M

Dexters

Hyde Park and Bayswater
4-5 Spring Street
London
W2 3RA
Sales
020 7298 1550

Energy Rating: C. We aim to make our particulars both accurate and reliable. However they are not guaranteed; nor do they form part of an offer or contract. If you require clarification on any points then please contact us, especially if you're traveling some distance to view. Please note that appliances and heating systems have not been tested and therefore no warranties can be given as to their good working order.

 **RICS** | Regulated
Estate Agent
and Letting Agent

dexters.co.uk