



The Water Gardens, W2

£575 Per week

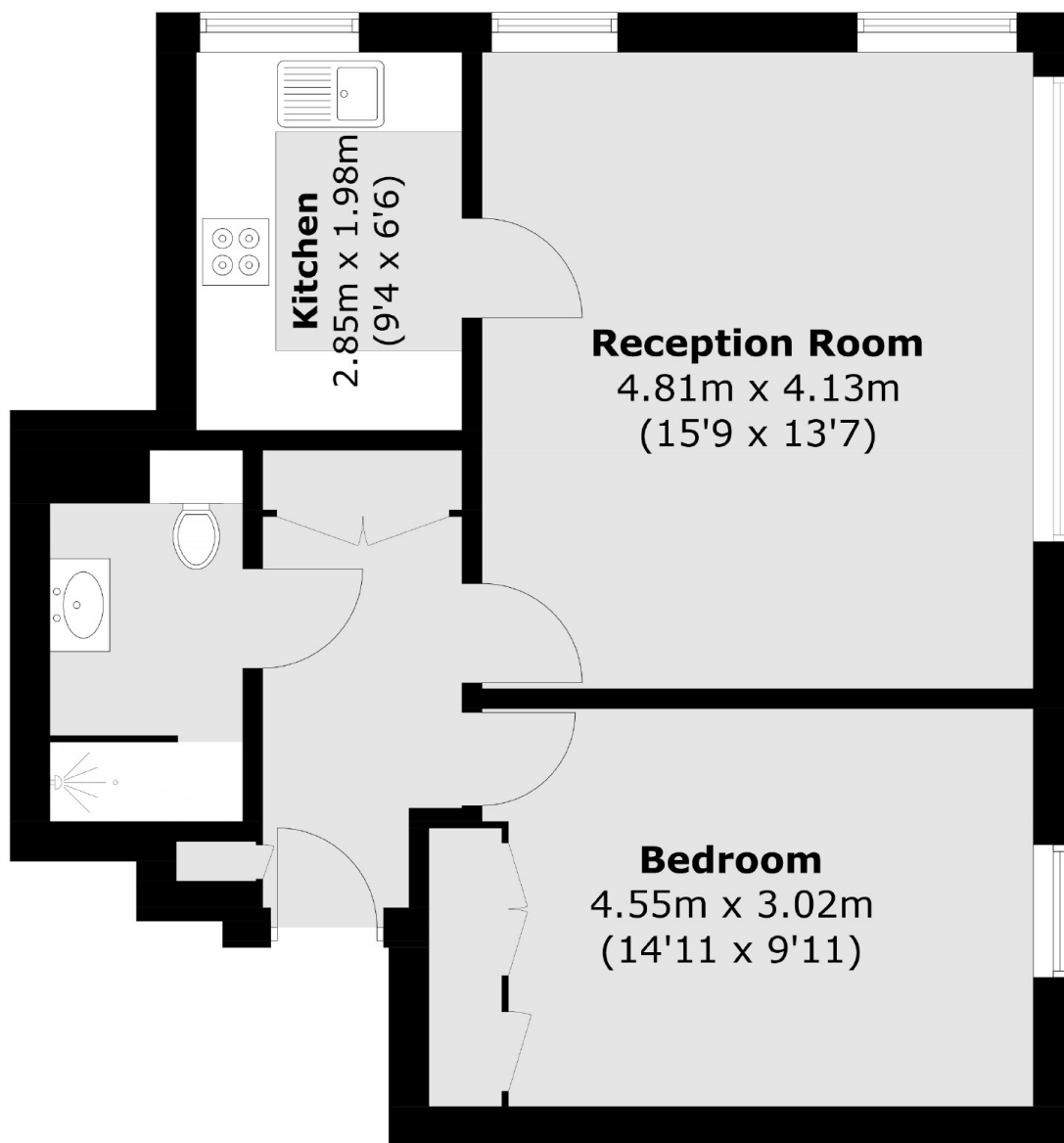
A one bedroom apartment on the ground floor of this portered building. The property has a spacious reception room, with space to dine, a separate modern kitchen and large double bedroom with fitted wardrobes.

The Water Gardens is close to Hyde Park and the numerous facilities and transport links of Oxford Street, Edgware Road and Paddington.

Features

- Double Bedroom
- Modern Kitchen
- Built In Storage
- Portered
- Hyde Park

The Water Gardens, London, W2



Total area (approx.): 50.6 sq. m (544.6 sq. ft)