



## Craven Hill Gardens, W2

£400 Per week

A modern one bedroom apartment in a period conversion close to Hyde Park and local transport. The property has an open plan reception, wooden floors, built in storage in the master and lift access.

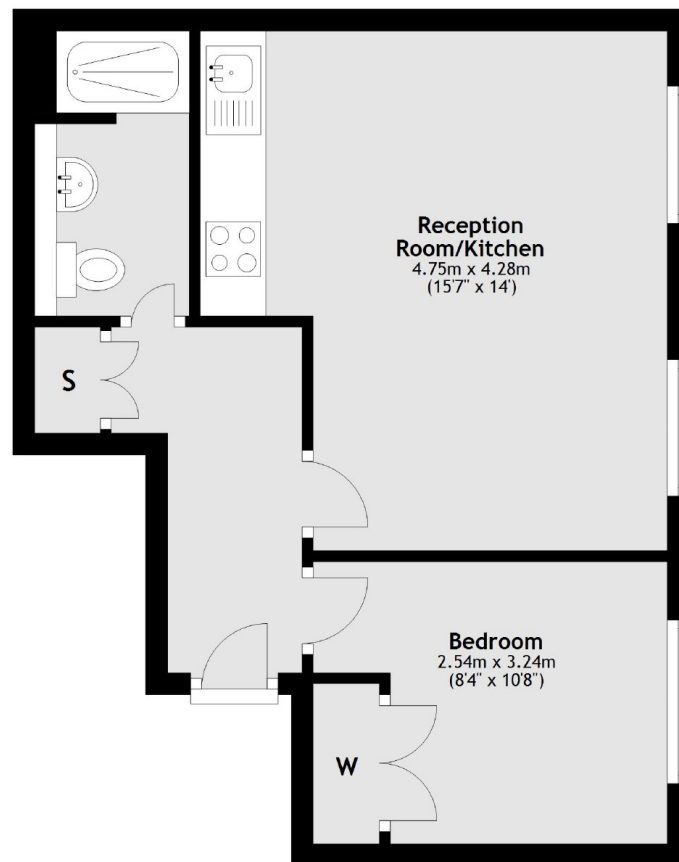
On the doorstep of Hyde Park, the property is within easy reach of Notting Hill and Queensway.

### Features

- One Bedroom
- Modern
- Wooden Floors
- Period Conversion
- Lift Access
- Hyde Park

## Craven Hill Gardens, London, W2

### Third Floor



Total area: approx. 36.4 sq. metres (391.7 sq. feet)

#### Contact

To arrange a viewing call our office on the number below or visit our website.



Energy Rating: C. We aim to make our particulars both accurate and reliable. However they are not guaranteed; nor do they form part of an offer or contract. If you require clarification on any points then please contact us, especially if you're traveling some distance to view. Please note that appliances and heating systems have not been tested and therefore no warranties can be given as to their good working order.