



Porchester Place, W2

£550,000

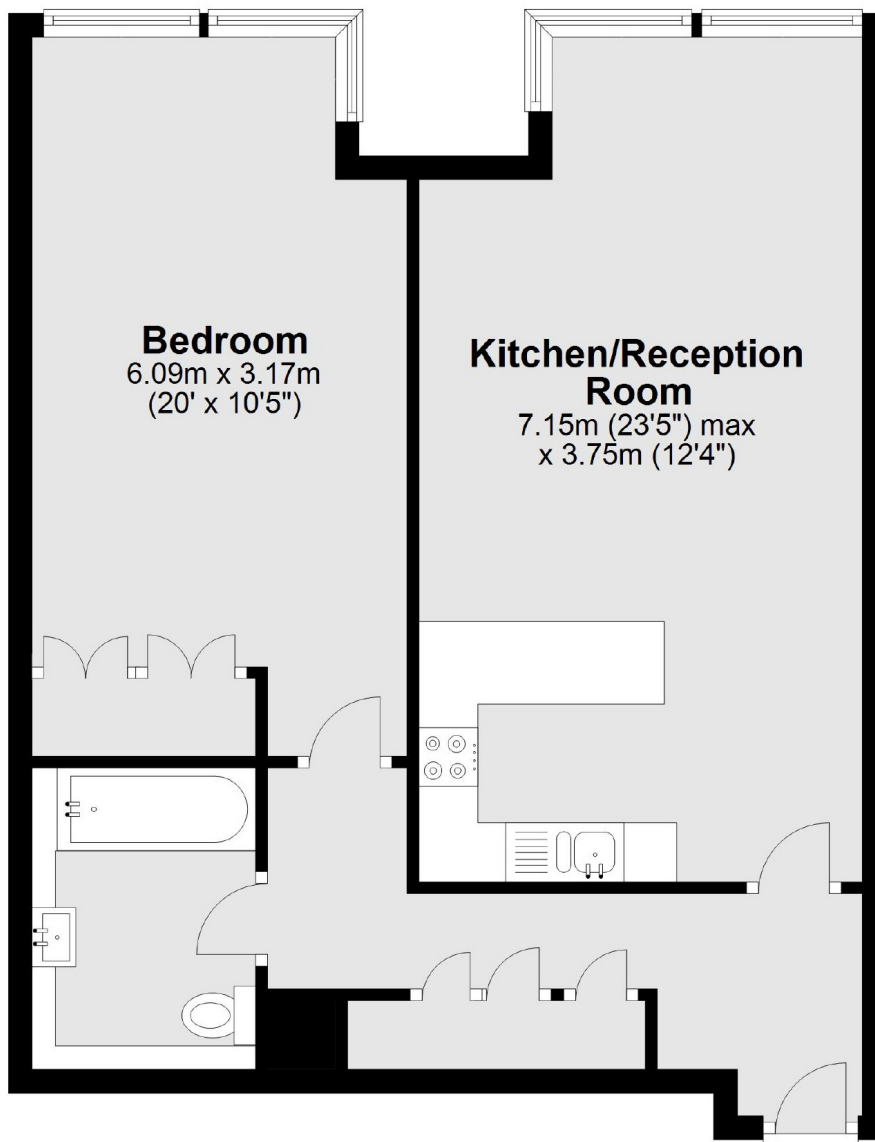
A well presented one bedroom apartment in a portered building located in the heart of The Hyde Park Estate. The apartment benefits from an open plan kitchen/reception room, large double bedroom with fitted wardrobes and a contemporary bathroom.

A prestigious complex on the Hyde Park Estate, located moments from Hyde Park, Marble Arch Station (Central Line) and Paddington Station (Bakerloo Line, Circle Line, District Line and Hammersmith & City Line).

Features

- One Bedroom
- Open Plan
- Wooden Flooring
- Lift
- Porter
- Hyde Park

Porchester Place,
London, W2



Total area: approx. 59.6 sq. metres (641.2 sq. feet)