



## Westbourne Terrace, W2

£595,000

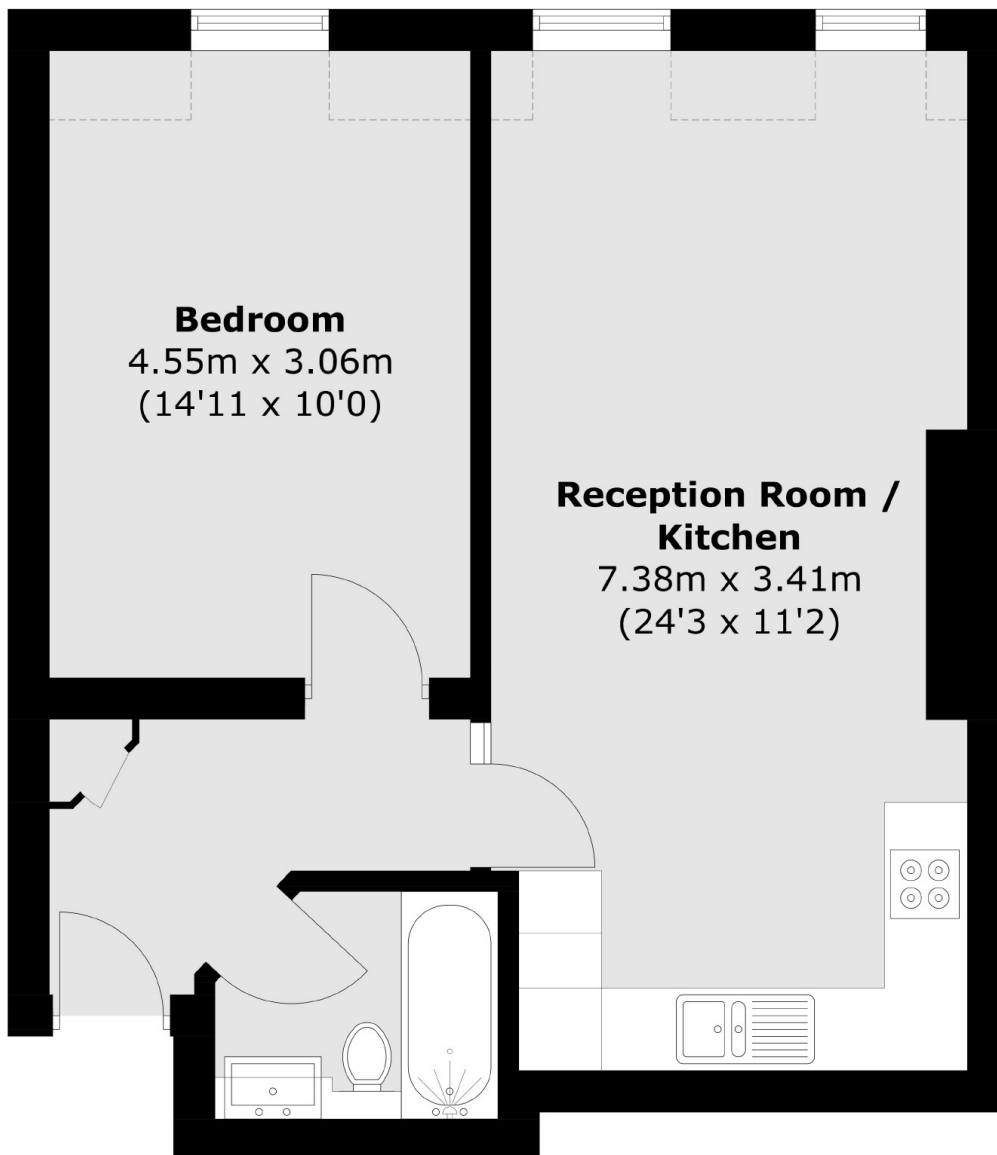
A charming one bedroom apartment set within a handsome stucco fronted building on the tree-lined Westbourne Terrace. There is an open plan reception with a fitted kitchen, and built in wardrobes in the bedroom.

Westbourne Terrace is conveniently located within close proximity to Paddington, Lancaster Gate and Bayswater stations. The property is only moments from the green spaces of Hyde Park and Kensington Gardens.

### Features

- One Double Bedroom
- Open Plan
- Hyde Park
- Period Conversion
- White Stucco Fronted
- Paddington

Westbourne Terrace,  
London, W2



Total area (approx.): 49.4 sq. m (531.7 sq. ft)