



Porchester Square Mews, W2

£1,096 Per week

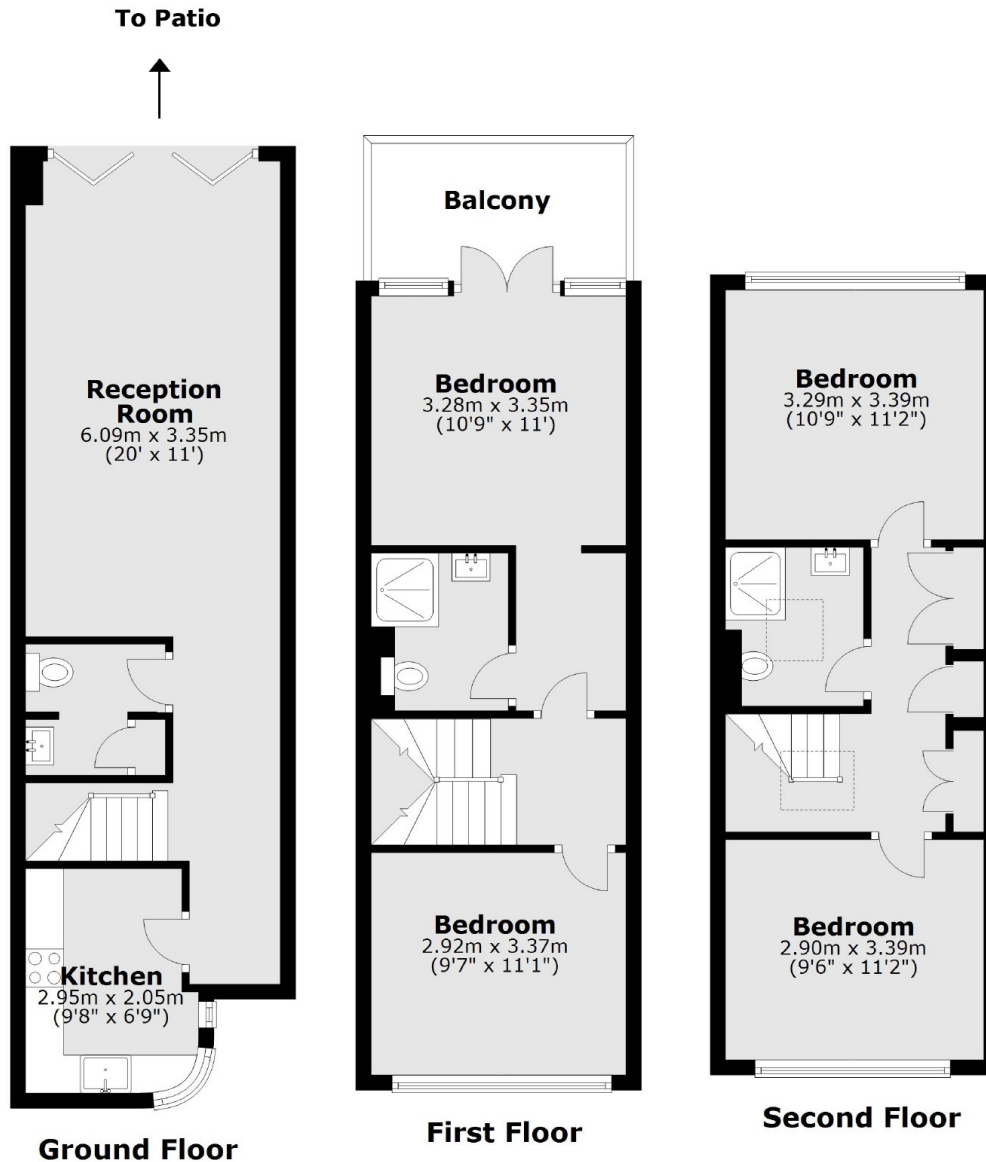
A spacious and newly refurbished four bedroom townhouse on a secluded mews in Bayswater, close to local shops and transport. There is a modern separate kitchen, reception with access to the patio, and a balcony off the principle bedroom.

Porchester Square Mews is moments from Queensway, Hyde Park and Westbourne Grove and within easy reach of Paddington and the Heathrow Express.

Features

- Newly Refurbished
- Mews House
- Four Bedrooms
- Private Patio
- Balcony
- En Suite Bathroom

Porchester Square Mews, London, W2



Total area: approx. 108.1 sq. metres (1163.5 sq. feet)