



The Quadrangle, W2 £1,500,000

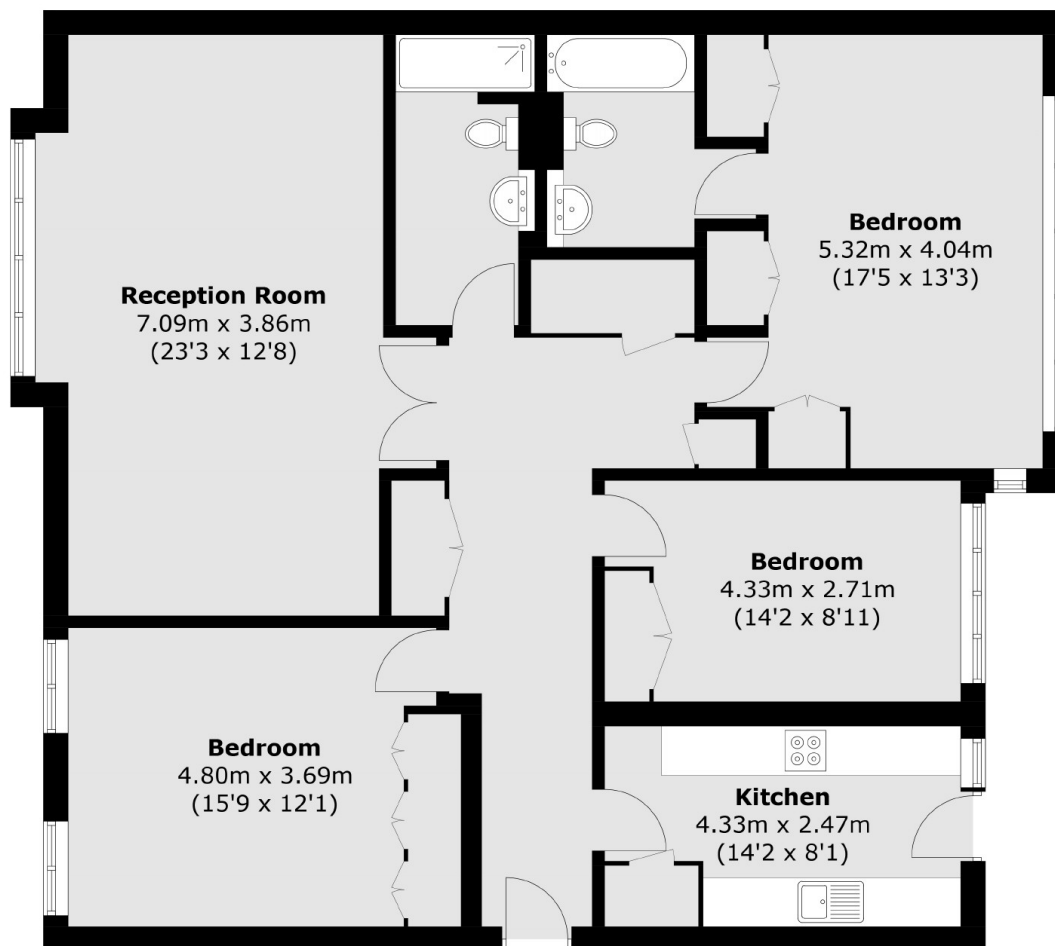
A recently refurbished and stylish three bedroom apartment in a purpose built, portered block. The property has a spacious reception with room to dine, a modern separate kitchen, and an en suite in the principal bedroom. Underground parking spaces are available by separate negotiation.

A prestigious gated complex on the Hyde Park Estate, located moments from Hyde Park, Marble Arch Station (Central Line) and Paddington Station (Bakerloo Line, Circle Line, District Line and Hammersmith & City Line).

Features

- Three Bedrooms
- Two Bathrooms
- Wooden Flooring
- Porter
- Communal Gardens
- Separate Kitchen

The Quadrangle, London, W2



Total area (approx.): 125.6 sq. m (1351.9 sq. ft)