

Seymour Street, W2

£775 Per week

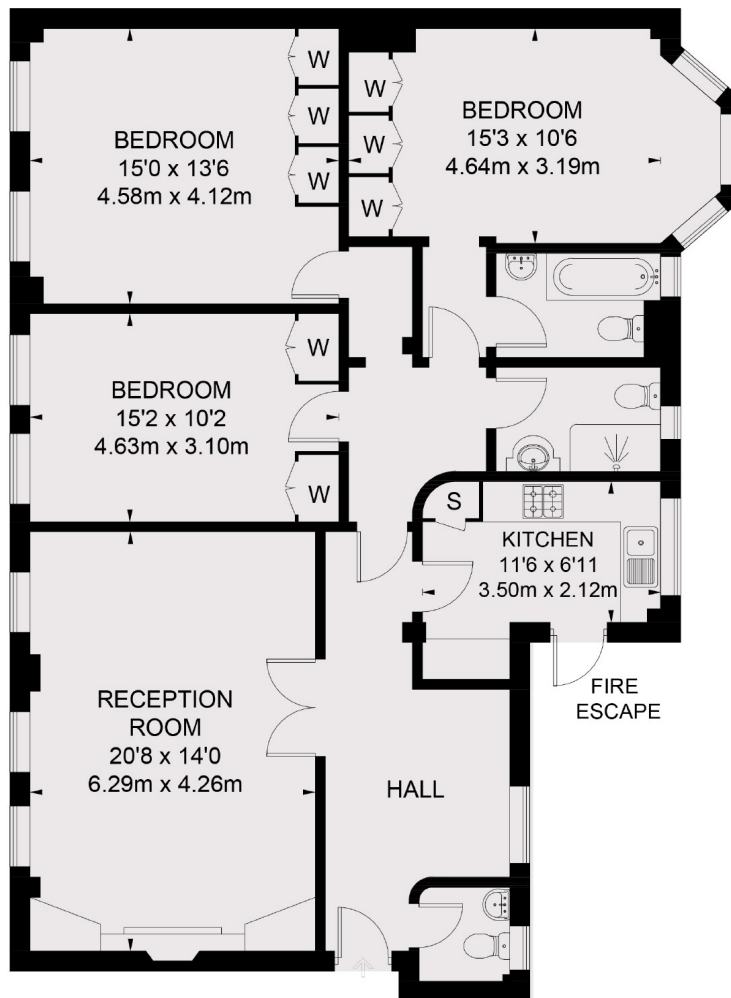
A three bedroom apartment packed with original features. The kitchen and bathrooms are contemporary and the bedrooms are generously sized with built in storage and wood floors.

Westchester House is on Seymour Street offering very easy access to Hyde Park, Oxford Street and Marylebone. The closest tube station is Marble Arch (Central Line) and Paddington Mainline Station for National Rail is close by.

Features

- Three Bedrooms
- Two Bathrooms
- Guest WC
- Wood Floors
- Storage
- Hyde Park

Seymour Street, London, W2



FOURTH FLOOR

TOTAL APPROX FLOOR AREA 1094 SQ FT (101.2 SQ M)

Contact

To arrange a viewing call our office on the number below or visit our website.



Energy Rating: D. We aim to make our particulars both accurate and reliable. However they are not guaranteed; nor do they form part of an offer or contract. If you require clarification on any points then please contact us, especially if you're traveling some distance to view. Please note that appliances and heating systems have not been tested and therefore no warranties can be given as to their good working order.