



Porchester Place, W2

£2,300 Per week

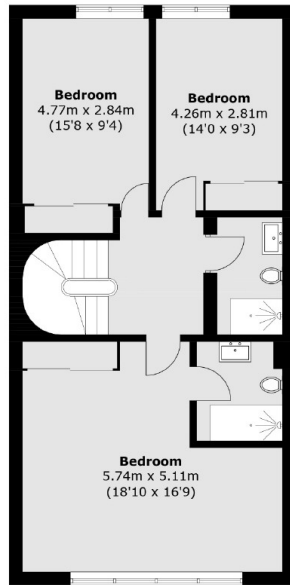
An elegant and stylish 5 bedroom house is arranged over 4 floors in the heart of Connaught Village. The property boasts bright, well proportioned rooms and a stunning location just north of Hyde Park.

Porchester Place is nestled in the trendy Connaught Village, offering a variety of high end independent boutiques and cafes. Oxford Street and Hyde Park are close by and Marble Arch is the nearest tube.

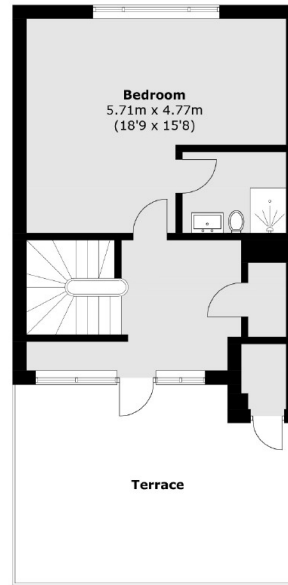
Features

Connaught Village
Five Bedrooms
Four Bathrooms
Wood Flooring
Terrace
3000 square feet +

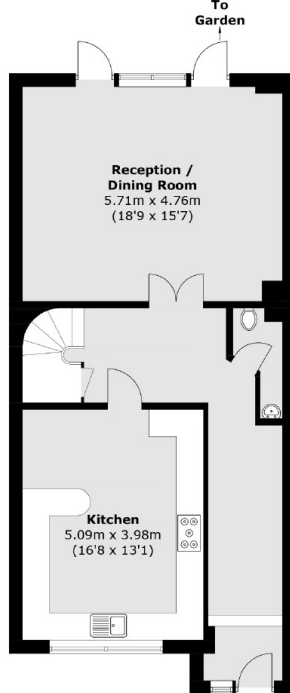
Porchester Place, London, W2



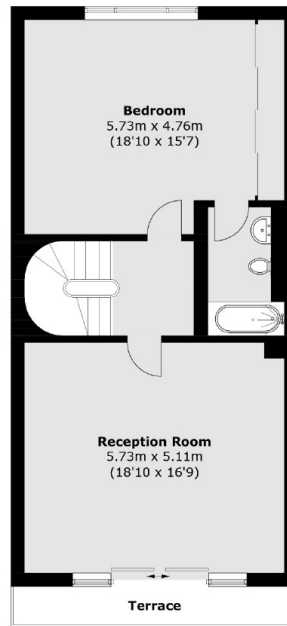
Second Floor



Third Floor



Ground Floor



First Floor

Total area (approx.): 259.4 sq. m (2,792.2 sq. ft)
Terrace (approx.): 31.5 sq. m (339.1 sq. ft)