



## Gloucester Terrace, W2

£500,000

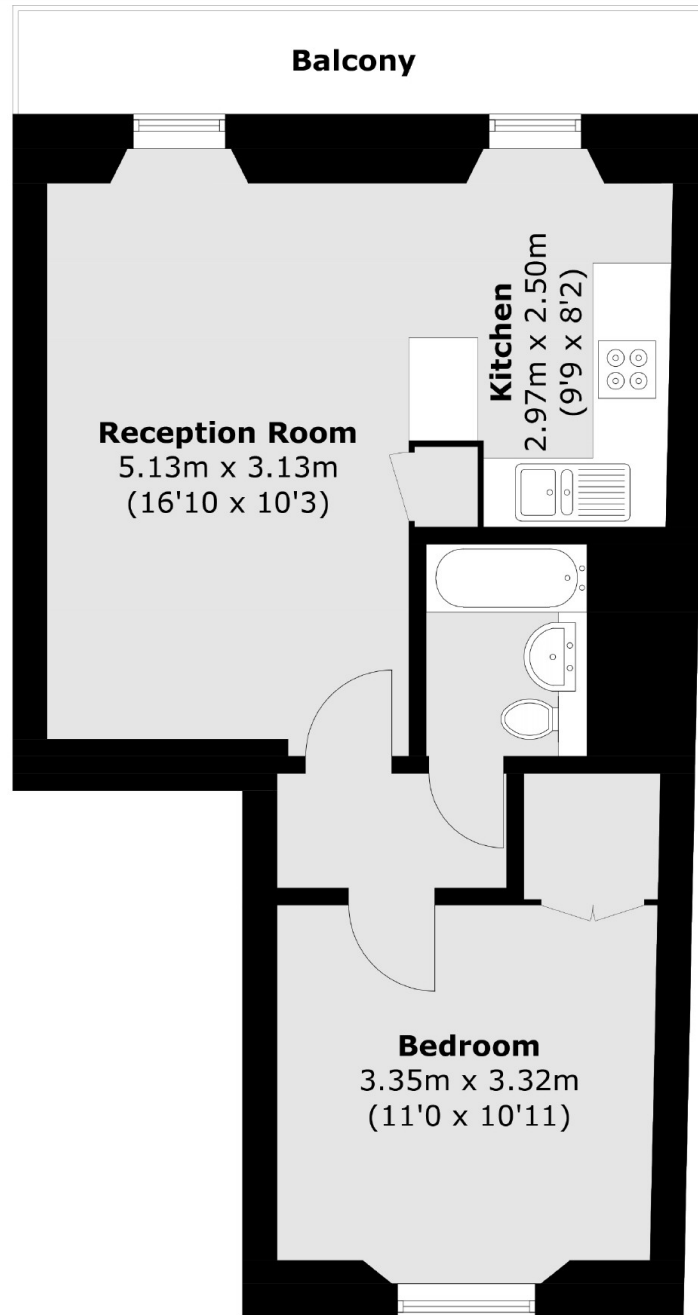
A first-floor one double bedroom apartment with fitted wardrobes within a stucco fronted period conversion. This property benefits from large windows, flooding the space with natural light and features a portico balcony. The property also benefits from a long lease and access to communal gardens.

Gloucester Terrace is conveniently placed within a short distance to Hyde Park. Lancaster Gate (Central Line) and Paddington underground and Paddington Train station, with the Elizabeth Line offering faster journeys into the City and towards Canary Wharf.

### Features

- Open Plan Kitchen-Reception
- First Floor
- Portico Balcony
- Double Bedroom
- Long Lease
- Communal Garden

Gloucester Terrace,  
London, W2



## First Floor

Total area (approx.): 42.1 sq. m (453.2 sq. ft)  
Balcony area (approx.): 5.4 sq. m (58.1 sq. ft)