

Westbourne Terrace, W2

£600 Per week

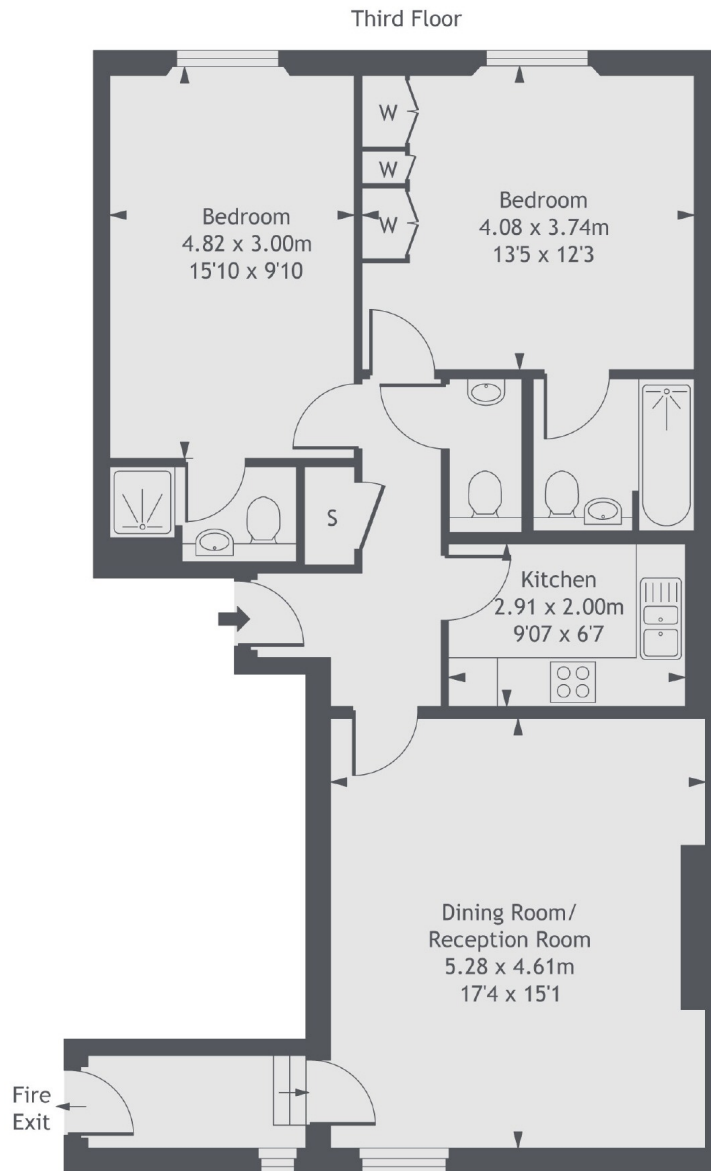
AVAILABLE IMMEDIATELY A newly refurbished two bedroom apartment on the fourth floor of a stucco front Victorian period conversion. The property has lift access, wooden flooring throughout, high ceilings and both bedrooms are en suite.

The nearest stations are Lancaster Gate and Paddington and Hyde Park is only a short walk away.

Features

Two Bedroom
Two Bathrooms
Wooden Floors
High Ceilings
Lift
Period Conversion

Westbourne Terrace, London, W2



Gross Internal Area 870 sq ft (80.85 sq m)

Contact

To arrange a viewing call our office on the number below or visit our website.



Energy Rating: C. We aim to make our particulars both accurate and reliable. However they are not guaranteed; nor do they form part of an offer or contract. If you require clarification on any points then please contact us, especially if you're traveling some distance to view. Please note that appliances and heating systems have not been tested and therefore no warranties can be given as to their good working order.