



Queensway, W2

£650 Per week

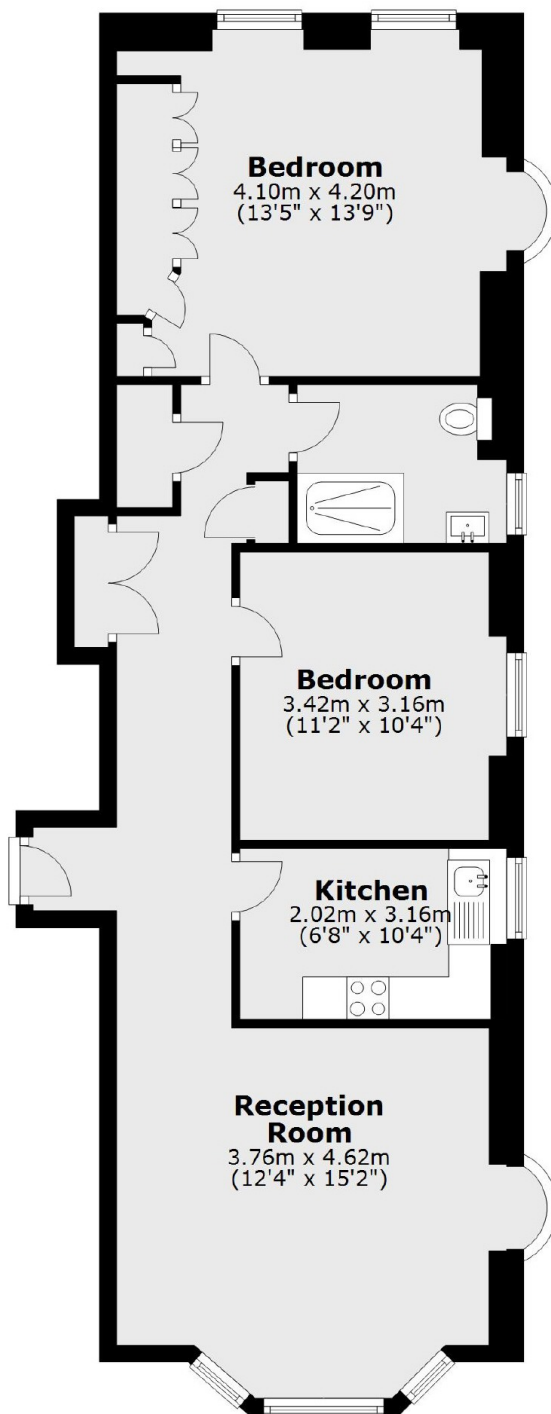
A two bedroom apartment in a purpose built portered block. The property has a spacious reception with wooden flooring and high ceilings, a separate kitchen, and built in wardrobes in the principle bedroom.

Princess Court is located just off Queensway, moments from the green spaces of Hyde Park & Kensington Gardens.

Features

- Two Bedrooms
- Portered Block
- Separate Kitchen
- High Ceilings
- Heating + Hot Water Included?

Queensway, London, W2



Total area: approx. 75.5 sq. metres (812.4 sq. feet)