



## Portsea Place, W2 £550,000

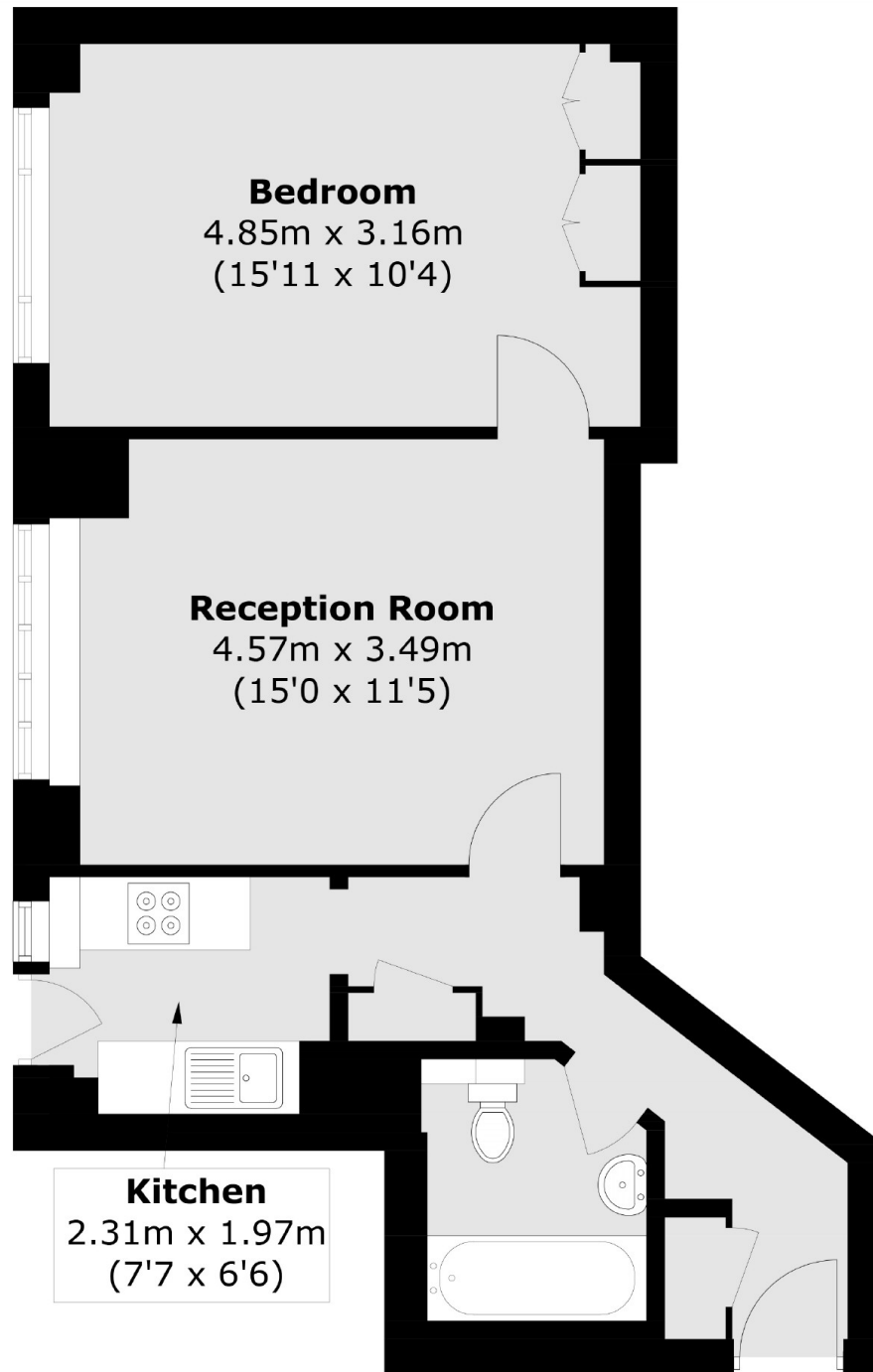
A well presented one double bedroom apartment, in a popular purpose built development with a lift and 24/7 portorage. The property has a spacious reception with parquet flooring and room to dine, a separate kitchen, and built in storage throughout.

Nestled between Connaught Square and Kendal Street, Portsea Hall is ideally positioned to enjoy all amenities and exclusive emporiums to be found in the uniquely elegant Connaught Village and the nearby hustle and bustle of Marble Arch and Oxford Street.

### Features

- One Bedroom
- Spacious Reception Room
- Separate Kitchen
- Lift
- Portered
- Hyde Park

Portsea Place,  
London, W2



Total area (approx.): 48.5 sq. m (522.0 sq. ft)