

## Praed Street, W2

£699,000

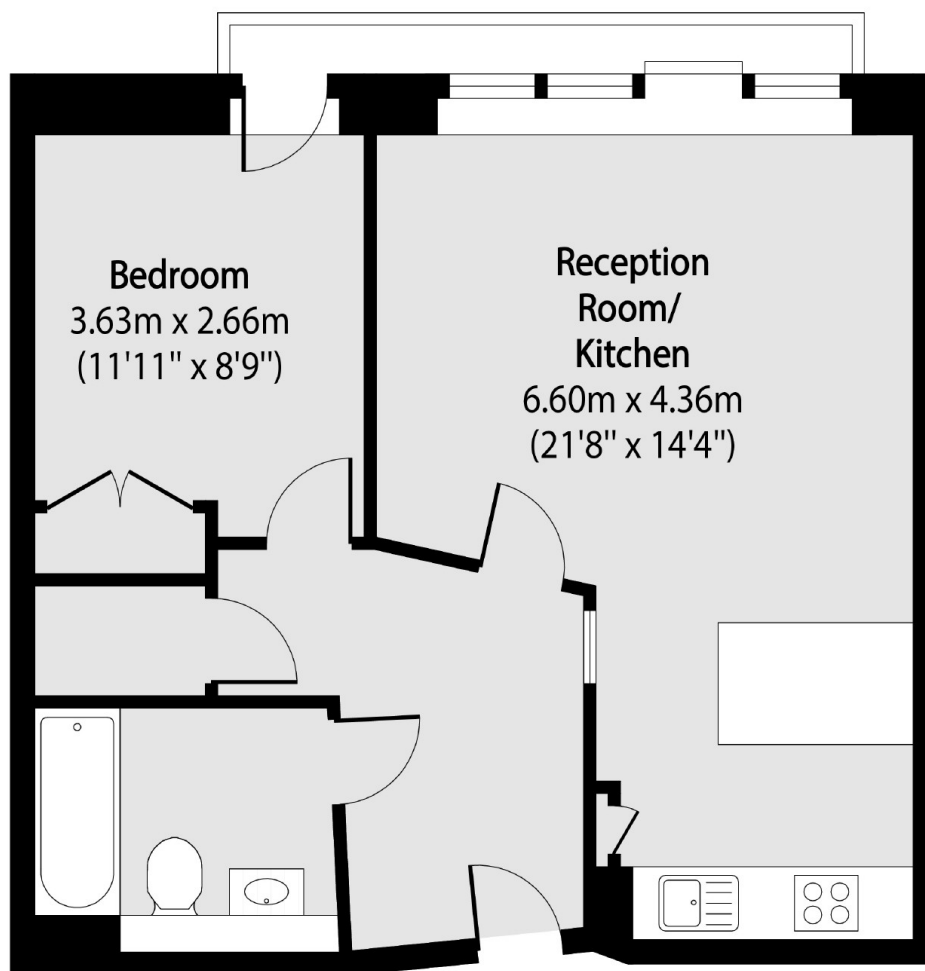
A one bedroom apartment, with off street parking in a modern portered block in Paddington Basin. The property has a spacious open plan reception with access to the balcony, fitted kitchen with a breakfast bar and built in storage.

The property is located close to Paddington Station, the green spaces of Hyde Park and a variety of shops, restaurants and bars in Paddington Basin.

### Features

- One Bedroom
- Lift and Concierge
- Balcony
- Parking Space
- Paddington
- Hyde Park

Praed Street,  
London, W2



Total area (approx): 49.05 sq m (528 sq. ft)