



St. Marys Terrace, W2

£865 Per week

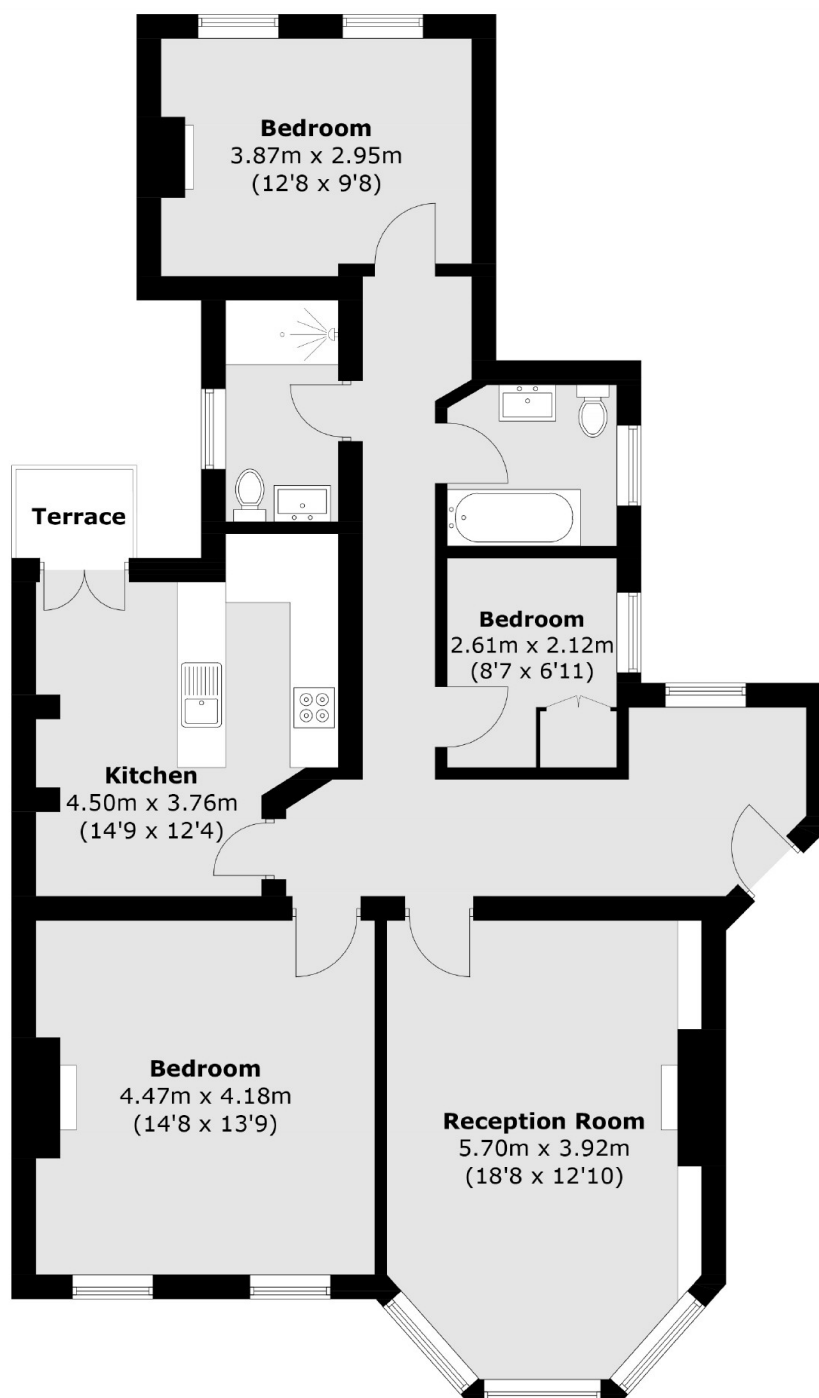
A recently refurbished three bedroom property on the raised ground floor of a mansion block. The flat has wood flooring throughout, high ceilings and period features.

Found near the canals of Little Venice and close to the A40 for motorists, the property is within easy reach of Paddington and Warwick Avenue.

Features

- Three Bedroom
- Raised Ground Floor
- Mansion Block
- Separate Kitchen
- Wood Flooring Throughout

St. Marys Terrace, London, W2



Total area (approx.): 103.1 sq. m (1,109.7 sq. ft)
Terrace area (approx.): 1.6 sq. m (17.2 sq. ft)