



## Hyde Park Square, W2

£395 Per week

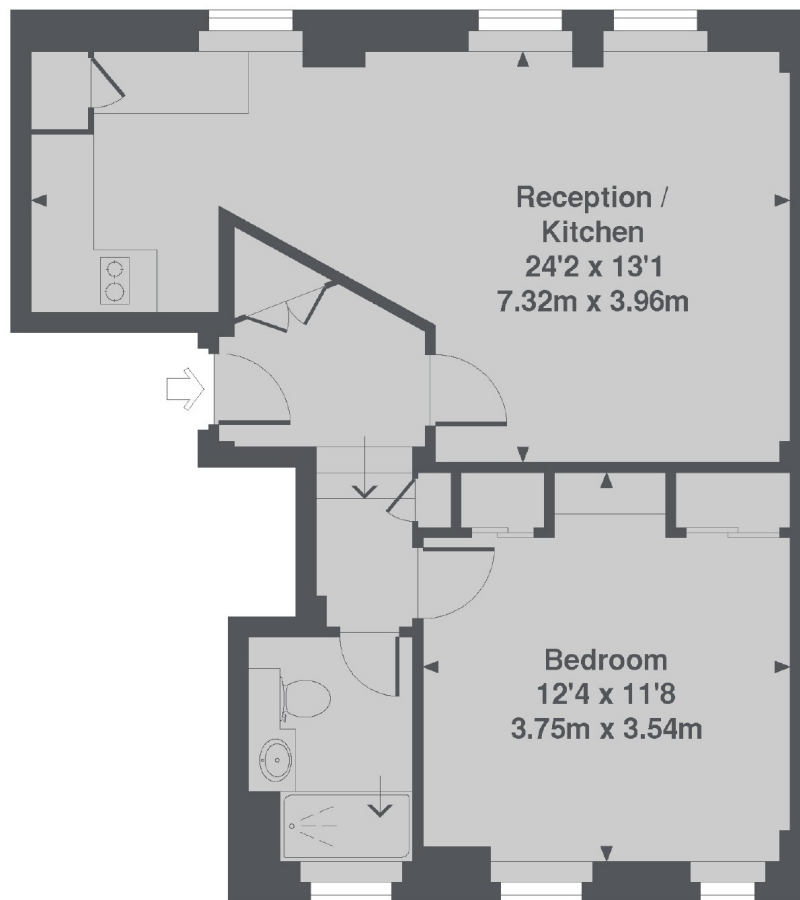
A spacious one bedroom apartment in a portered block with access to the communal garden square. With hot water and heating included in the rent the property has parquet flooring and a modern bathroom.

Moments from the green spaces of Hyde Park, the property is close to Connaught Village and Lancaster Gate is the nearest tube.

### Features

- One Bedroom
- Porter
- Communal Gardens
- Modern Bathroom
- Additional Storage
- Parquet Flooring

## Hyde Park Square, London, W2



Ground Floor

Hyde Park Square, W2

Total Approx. Floor area 487 Sq. Ft. (45.2 Sq. M.)

### Contact

To arrange a viewing call our office on the number below or visit our website.



Energy Rating: D. We aim to make our particulars both accurate and reliable. However they are not guaranteed; nor do they form part of an offer or contract. If you require clarification on any points then please contact us, especially if you're traveling some distance to view. Please note that appliances and heating systems have not been tested and therefore no warranties can be given as to their good working order.