



Gloucester Terrace, W2

£450 Per week

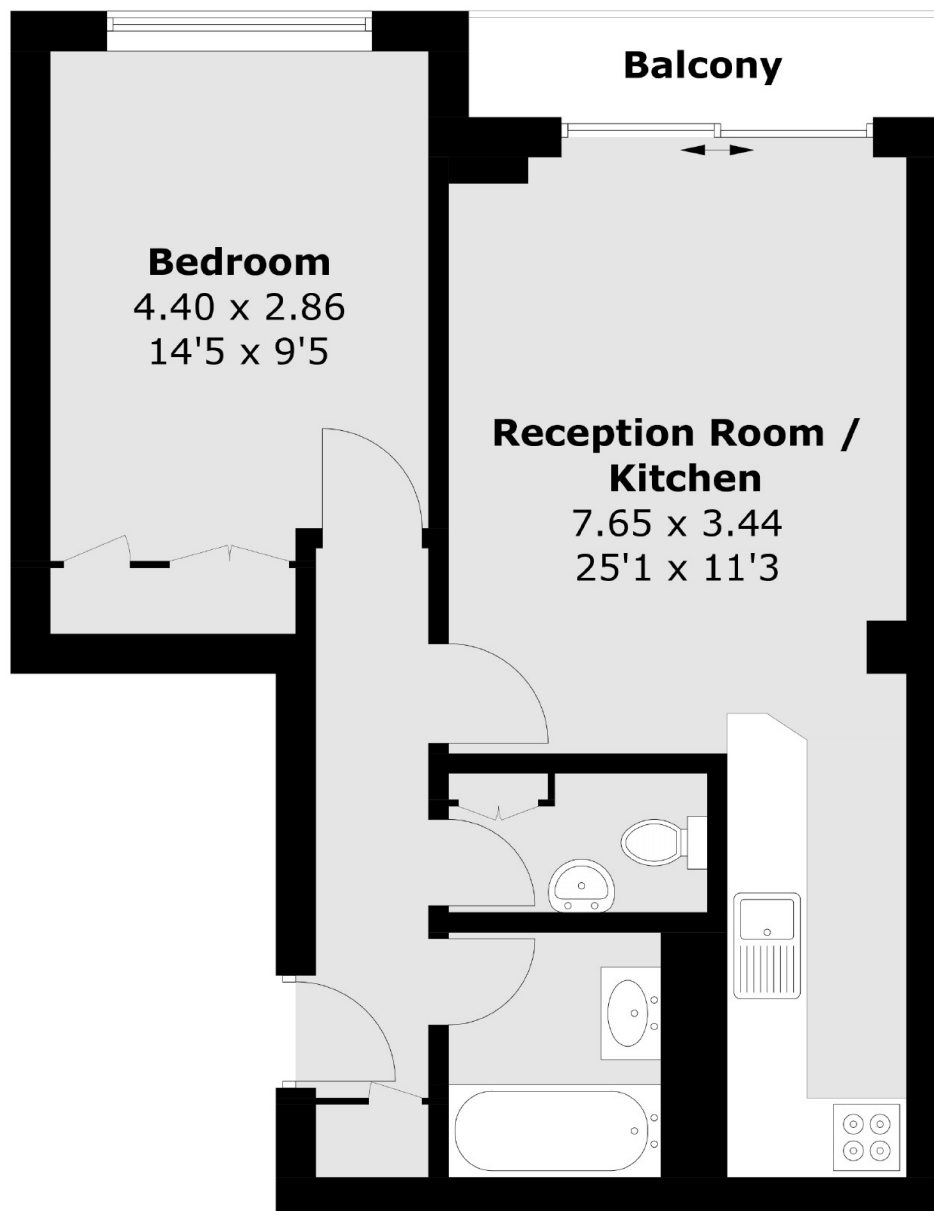
A bright and spacious one bedroom apartment on the second floor of a period conversion. The property has a semi open plan kitchen and plenty of storage throughout.

Situated moments away from Hyde Park, this property is perfectly situated for easy access into central London and the many shops, bars and restaurant that Paddington has to offer.

Features

- One Bedroom
- Second Floor Flat
- Lift Access
- Semi Open Plan Kitchen
- High Ceilings
- Plenty Of Storage

Gloucester Terrace,
London, W2



Total area (approx.): 44.2 sq. m (475.7 sq. ft)
Balcony area (approx.): 2.6 sq. m (28.0 sq. ft)