



Craven Hill Gardens, W2 £225,000

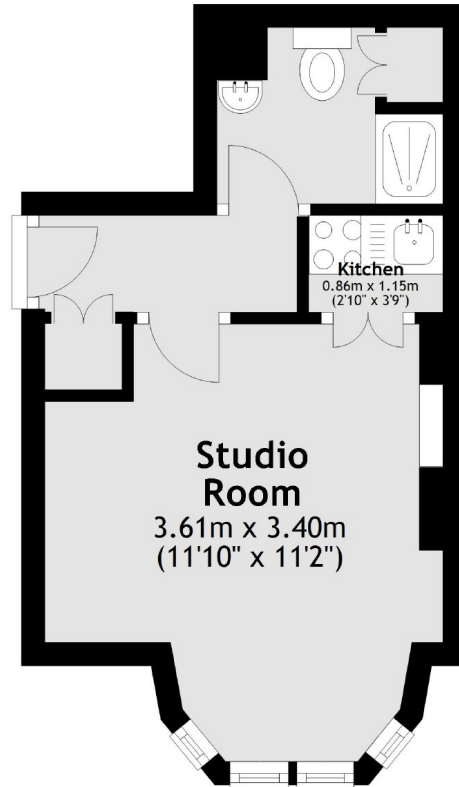
A studio apartment located on the first floor of this lovely Victorian period conversion. The property has an entrance hallway with storage, a bathroom and a good size studio room with a kitchenette and bay window.

Craven Hill Gardens is well located for the wide variety of shops and restaurants available in Queensway. Hyde Park is a short distance away. Lancaster Gate and Queensway are the nearest Underground Stations.

Features

- Studio
- Bay Window
- Victorian Conversion
- High Ceilings
- Amazing Location

Craven Hill Gardens, London, W2



Total area: approx. 17.3 sq. metres (186.5 sq. feet)