



Orsett Terrace, W2

£795,000

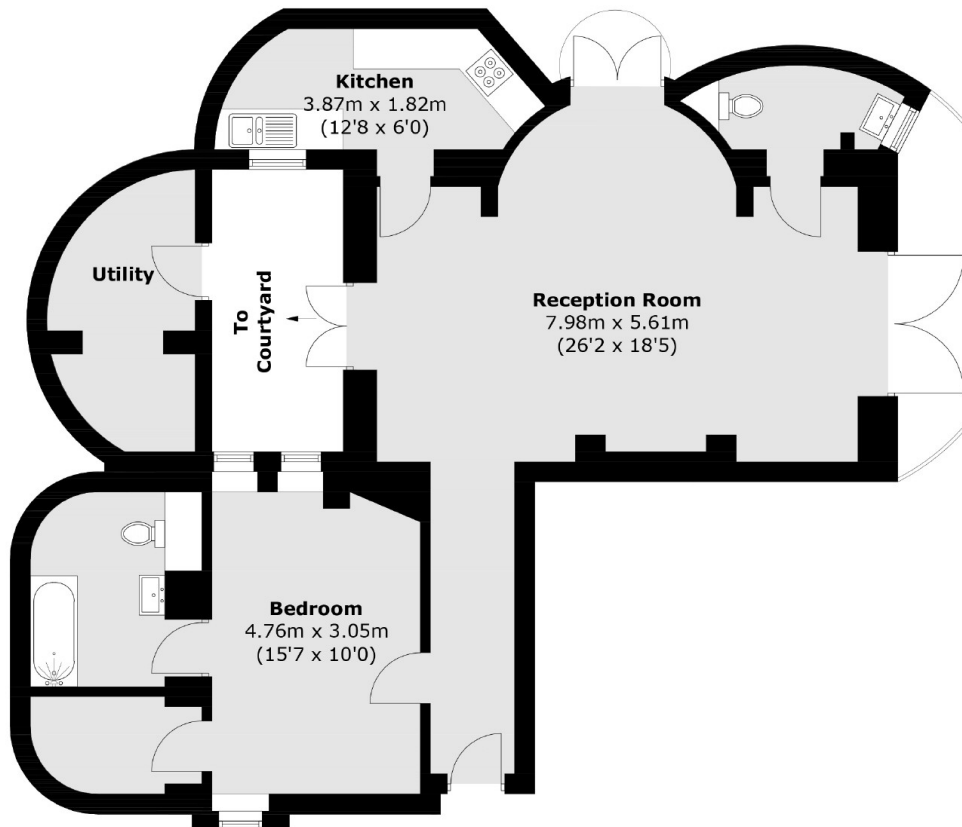
A one bedroom apartment in a Grade II listed detached villa. The property has a spacious reception with room to dine, access to two patios and wooden flooring throughout. There is a modern separate kitchen, study, and the bedroom has an en suite and walk-in wardrobe.

Close to Hyde Park and Queensway, Orsett Terrace is a tree lined street a short walk from local shops, restaurants and transport. Paddington underground and Train station are also nearby.

Features

- One Bedroom
- Separate Kitchen
- Two Patios
- Share Of Freehold
- Grade II Listed
- Close To Paddington

Orsett Terrace,
London, W2



Total area (approx.): 80.9 sq. m (870.8 sq. ft)
(Excluding Courtyard)
Utility (approx.): 7.6 sq. m (81.8 sq. ft)