



Gloucester Square, W2

£1,795 Per week

A stunning and recently refurbished two bedroom, three bathroom split level apartment with high ceilings in a stucco fronted Period conversion close to Hyde Park and local transport.

Gloucester Square is moments from Hyde Park and close to the transport links of Paddington and Lancaster Gate. Marylebone and Mayfair are nearby for the attractions of the West End.

Features

- Double Bedrooms
- Three Bathrooms
- Private Entrance
- Patio
- Modern
- Period Conversion

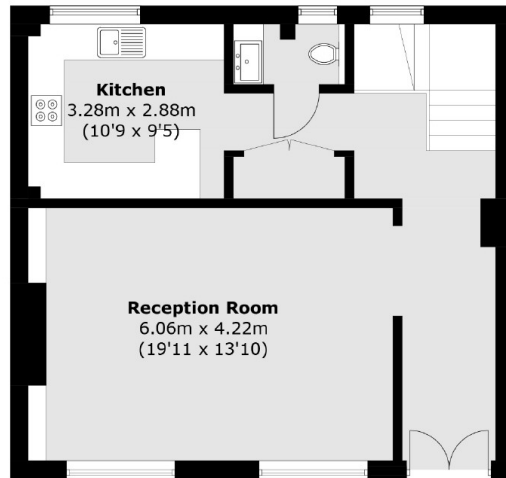


Gloucester Square, W2

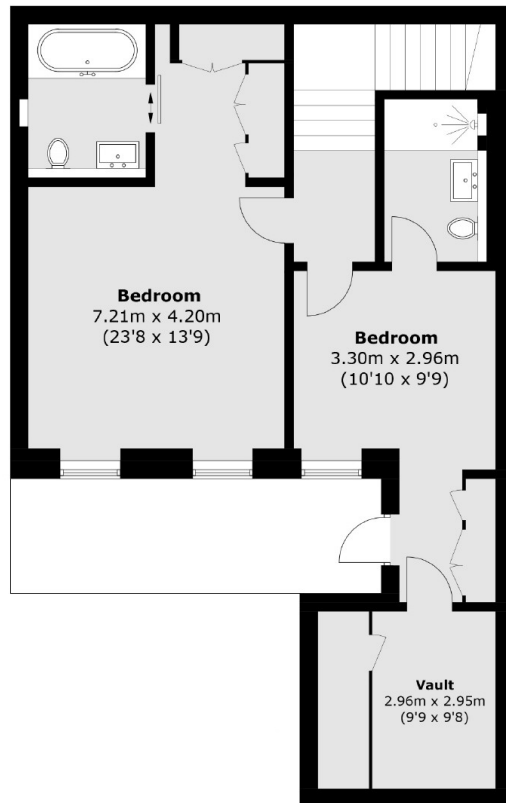
Layout includes a bright reception room with bespoke joinery and fabulous ceiling heights throughout. Leading through the entrance hall with the guest WC on the right, further leading round to the kitchen which has been fully integrated with top of the range Miele appliances, bright sash window and cupboards with underlighting.



Gloucester Square, London, W2



Ground Floor



Lower Ground Floor

Total area (approx.): 115.8 sq. m (1,246.5 sq. ft)