



## Craven Hill Gardens, W2 £900,000

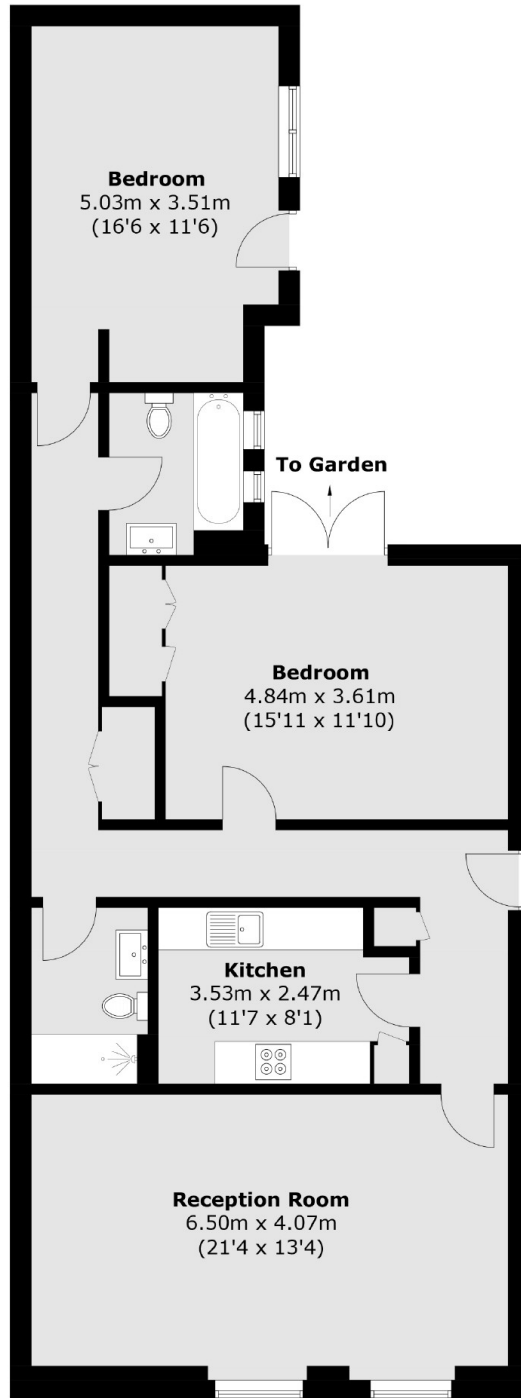
A two bedroom apartment in a beautiful white stucco-fronted building, located on one of London's charming garden squares. The property has a spacious reception with room to dine, a separate fitted kitchen, and access to the patio from both bedrooms.

Craven Hill Gardens is a leafy and picturesque square within easy reach of Notting Hill and the West End. Queensway and Lancaster Gate are close by and Bayswater is the nearest underground station.

### Features

- Two Double Bedroom
- Two Bathroom
- Share Of Freehold
- Patio
- Separate Kitchen
- Hyde Park

# Craven Hill Gardens, London, W2



Total area (approx.): 102.6 sq. m (1,104.3 sq. ft)