



Sheldon Square, W2

£700,000

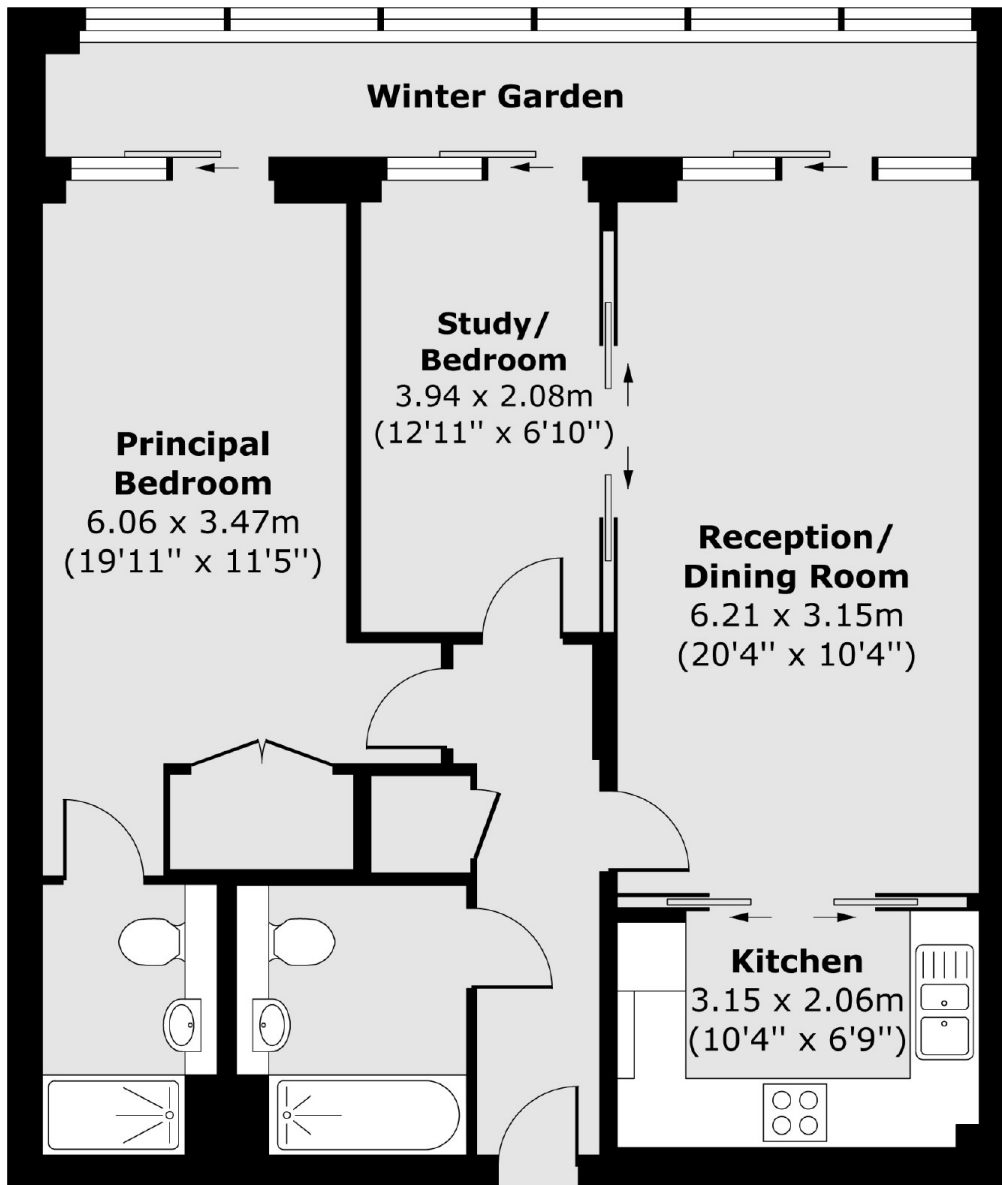
A two bedroom apartment on the sixth floor of a portered block. The property has a spacious semi-open plan reception with room to dine and access to the winter garden overlooking the Union Canal. The second bedroom is currently used as a study, with an en suite in the principle bedroom.

The property is situated in the popular Paddington Basin and allows for easy access in and out of town via A40 and Paddington Station. Westbourne Grove and Hyde Park are also moments away from the property.

Features

- Two Bedroom
- Two Bathroom
- Semi-Open Plan
- Winter Garden
- Built In Storage
- Paddington

Sheldon Square,
London, W2



Total area (approx.) 68.59 sq. m (738 sq. ft)
Winter Garden area (approx.) 8.11 sq. m (87 sq. ft)