

## Edgware Road, W2

£700,000

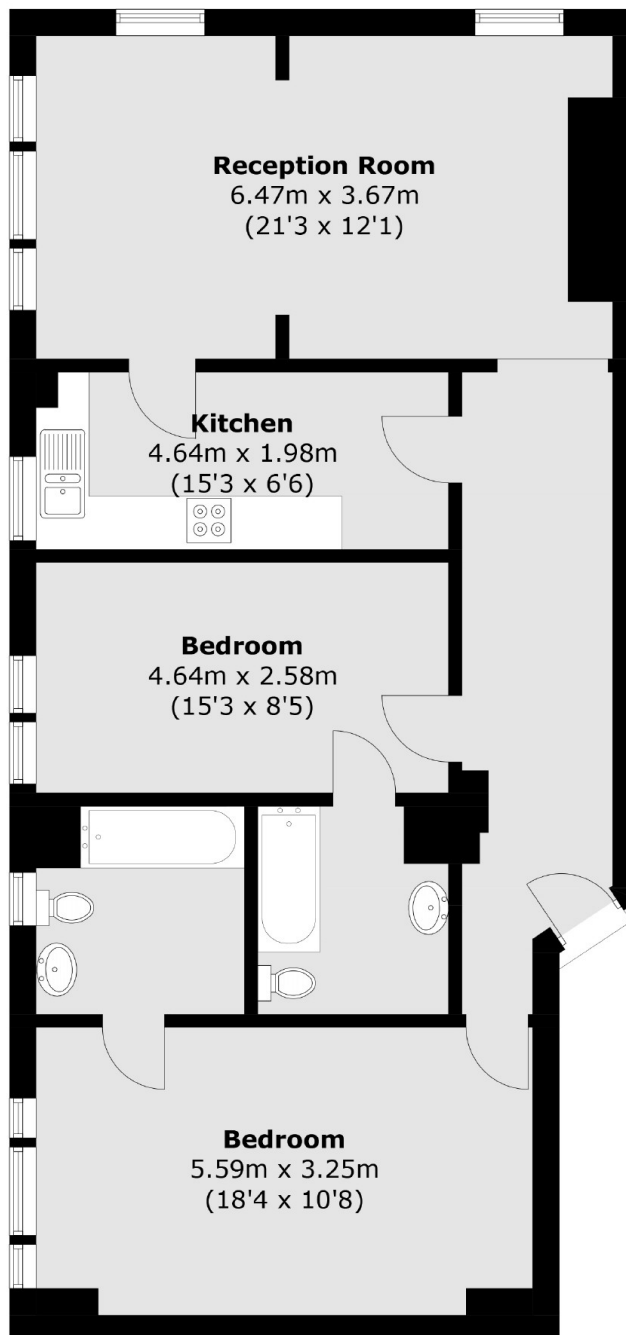
A spacious flat in a portered purpose built block (with a lift) within walking distance of Hyde Park. The property has a double reception with room to dine, a modern fitted separate kitchen and en suites in both bedrooms.

Park West is conveniently located for numerous local amenities between Connaught Square, Kendal Street and Edgware Road. Closest underground station is Marble Arch (Central Line).

### Features

- Two Double Bedrooms
- Two En Suite Bathrooms
- Portered Block
- Separate Kitchen
- Lift
- Hyde Park

Edgware Road,  
London, W2



Total area (approx.): 88.3 sq. m (950.9 sq. ft)

**Dexters**

Hyde Park and Bayswater  
4-5 Spring Street  
London  
W2 3RA  
Sales  
020 7298 1550

Energy Rating: E. We aim to make our particulars both accurate and reliable. However they are not guaranteed; nor do they form part of an offer or contract. If you require clarification on any points then please contact us, especially if you're traveling some distance to view. Please note that appliances and heating systems have not been tested and therefore no warranties can be given as to their good working order.

 **RICS** | Regulated  
Estate Agent  
and Letting Agent

[dexters.co.uk](http://dexters.co.uk)