



Inverness Terrace, W2 £500,000

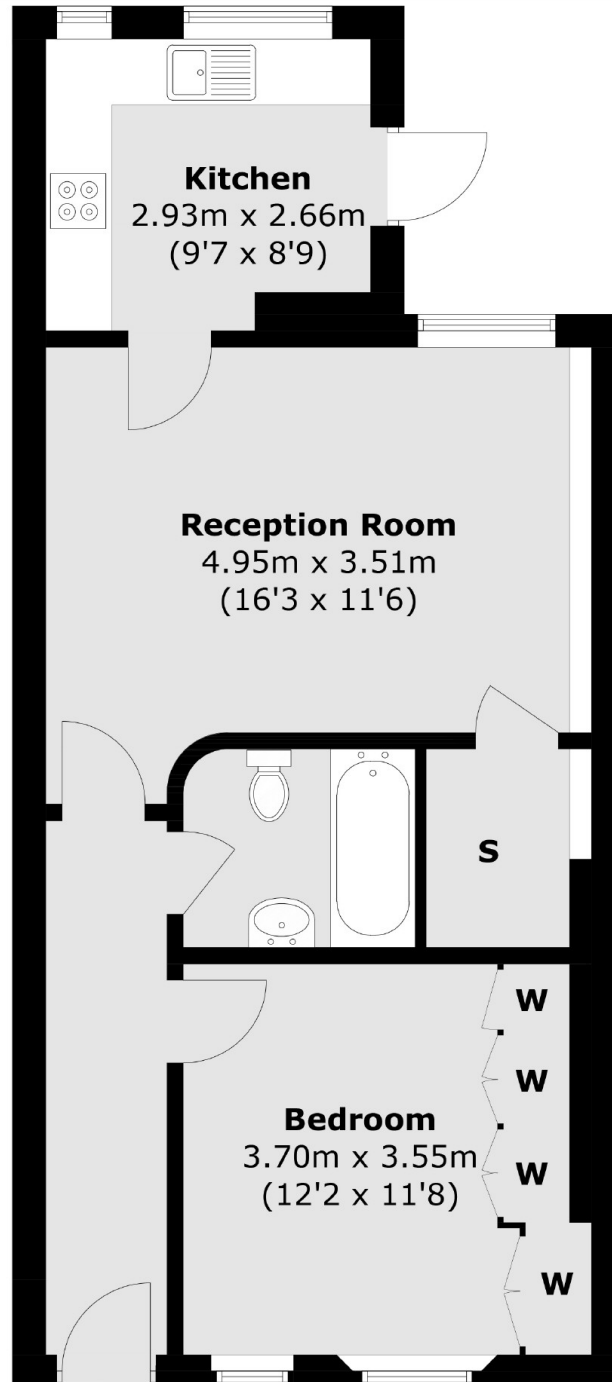
A one bedroom garden flat measuring approximately 575 Sq.Ft offering a good sized east facing living-dining room and separate kitchen. Further benefits include a large storage room, bathroom and outside space at the rear.

Inverness Terrace is located moments from the green open spaces of Hyde Park. There is an array of local amenities situated at Queensway and the fashionable boutiques offered in Notting Hill.

Features

- Patio
- Separate Kitchen
- One Double Bedroom
- 558 Sq.Ft
- Leasehold
- Bayswater

Inverness Terrace,
London, W2



Total area (approx.): 53.5 sq. m (575.8 sq. ft)