



## Sussex Gardens, W2

£840,000

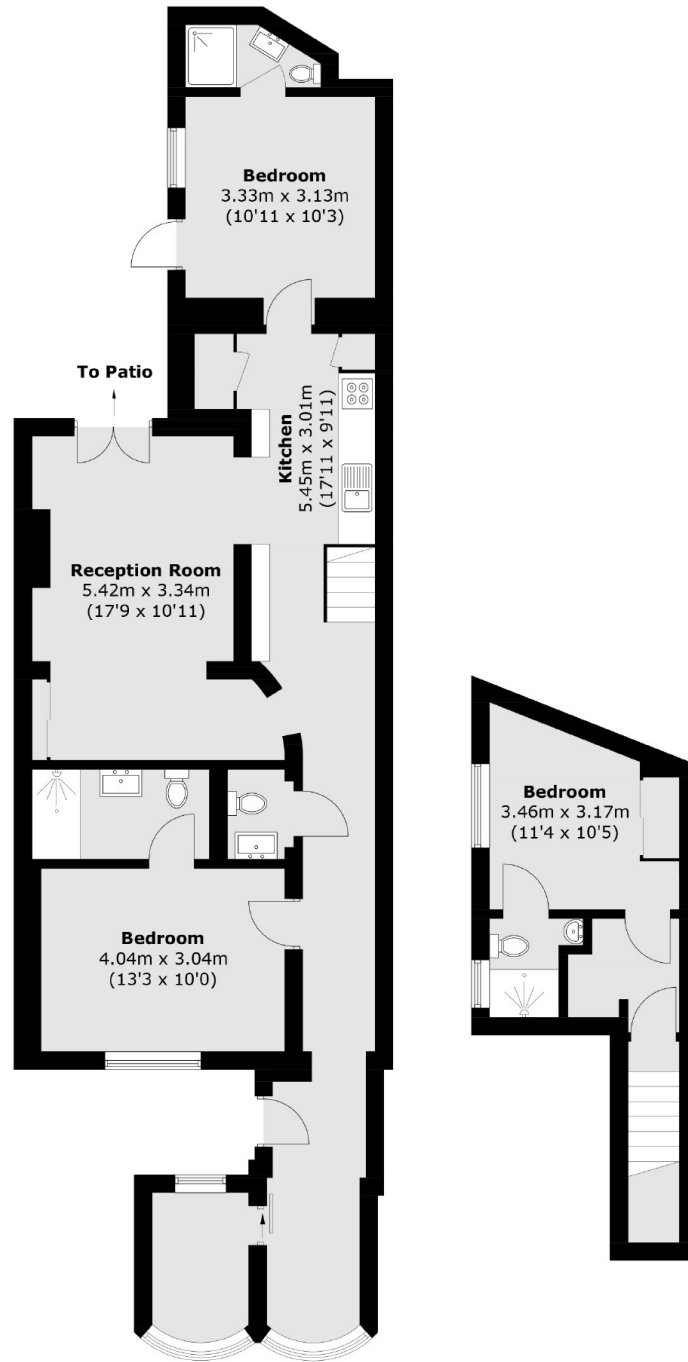
A three double bedroom apartment, with three bathrooms (all en suite) in a Victorian conversion with a separate kitchen and reception room leading out to the private patio garden.

In a prime residential location within 400 yards to Paddington train and underground station, Lancaster Gate station and is within 300 yards to Hyde Park. In addition, there are multiple restaurants, shops, and pubs within close proximity.

### Features

- Rental Investment
- Three Bedrooms
- Three Bathrooms
- Own Front Door
- Private Patio Garden
- Share of Freehold

# Sussex Gardens, London, W2



**Lower Ground Floor**

**Ground Floor**

Total area (approx.): 107.8 sq. m (1,160.3 sq. ft)