



Gloucester Terrace, W2

£550 Per week

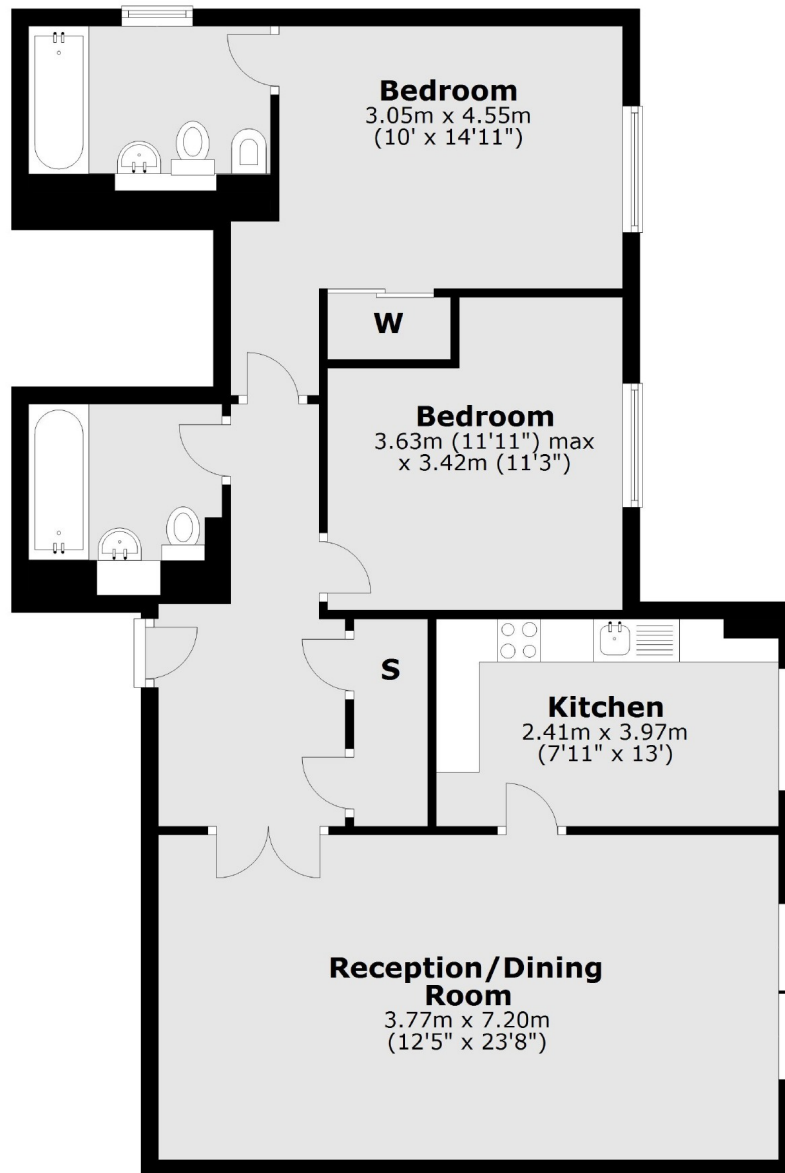
A spacious two double bedroom apartment in a popular and well maintained block. Layout includes a large reception with dining area, a separate kitchen with dishwasher and two bathrooms.

Trinity Court is close to Paddington Station, Westbourne Grove and is only a short walk away from Hyde Park.

Features

- Spacious Lounge
- Wood Flooring
- Two Double Bedrooms
- Two Bathrooms
- Portered Block
- Fitted Storage

Gloucester Terrace, London, W2



Ground Floor

Total area: approx. 87.1 sq. metres (937.7 sq. feet)

Contact

To arrange a viewing call our office on the number below or visit our website.



Energy Rating: D. We aim to make our particulars both accurate and reliable. However they are not guaranteed; nor do they form part of an offer or contract. If you require clarification on any points then please contact us, especially if you're traveling some distance to view. Please note that appliances and heating systems have not been tested and therefore no warranties can be given as to their good working order.