



Apartment

7 KNIGHTS MEWS,
ASHBY DE LA ZOUCH,
ASHBY DE LA ZOUCH,
LEICESTERSHIRE, LE65
2FQ

PCM

£1,100 PCM

FEATURES

- LUXURIOUS and generously proportioned 2 bedroom, second floor apartment
- In the heart of Ashby de la Zouch Town Centre
- Spacious Open Plan Kitchen/Living Area
- Two good sized double bedroom with wardrobes
- Large family bathroom
- Allocated parking for one vehicle



HOWKINS &
HARRISON

2 Bedroom Apartment located in Ashby de la Zouch

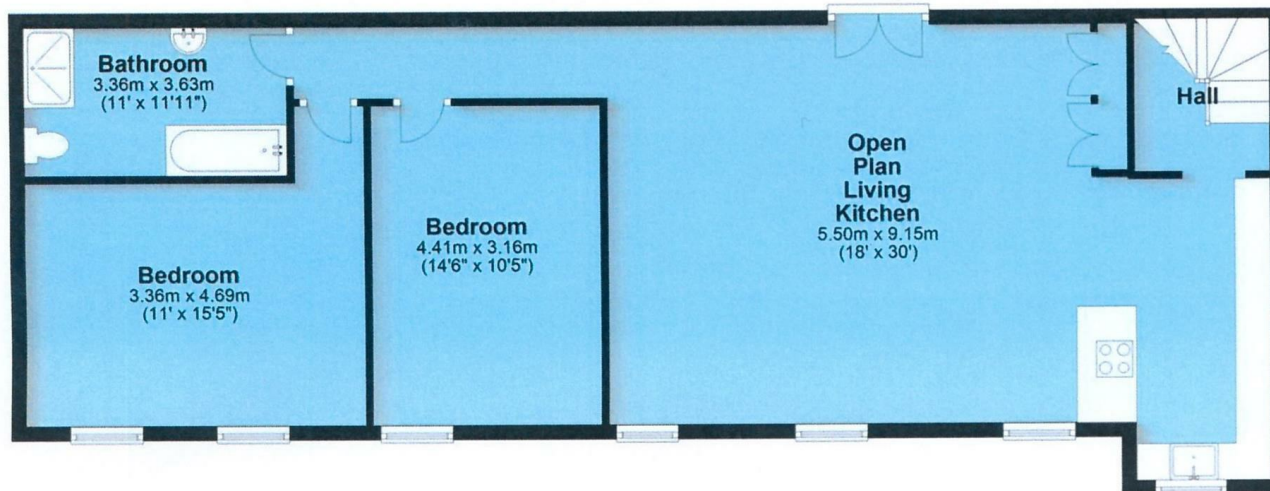
AVAILABLE TO LET is this LUXURIOUS and generously proportioned 2 BED, SECOND FLOOR APARTMENT set in a Grade 2 listed building in the heart of Ashby Town Centre.

The property comprises of a spacious, open plan kitchen/living area, rich with natural light. The bespoke, fitted kitchen features an integrated cooker, hob with extractor, fridge-freezer and dishwasher.

Leading from the living area are two good-sized double bedrooms with wardrobes and a large family bathroom.

Outside, there is one allocated parking space and a lovely communal garden with seating area. The property benefits from gas central heating and is unfurnished.

No pets or sharers and is available early Early August 2025



Call us on

01530 410935

ashby.lettings@howkinsandharrison.co.uk

howkinsandharrison.co.uk

Council Tax Band

B

Energy Efficiency Rating		
	Current	Potential
Very energy efficient - lower running costs		
(92 plus) A		
(81-91) B		
(69-80) C	78	78
(55-68) D		
(39-54) E		
(21-38) F		
(1-20) G		
Not energy efficient - higher running costs		
England & Wales		
EU Directive 2002/91/EC		

Agents Note: Whilst every care has been taken to prepare these particulars, they are for guidance purposes only. All measurements are approximate and are for general guidance purposes only and whilst every care has been taken to ensure their accuracy, they should not be relied upon and potential buyers are advised to recheck the measurements.

HOWKINS &
HARRISON