

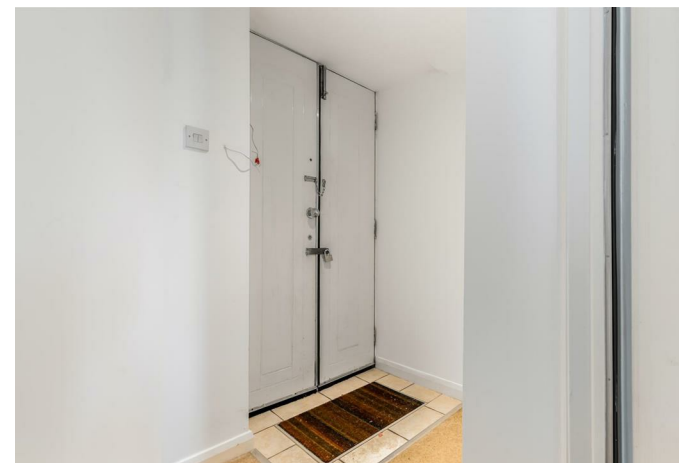


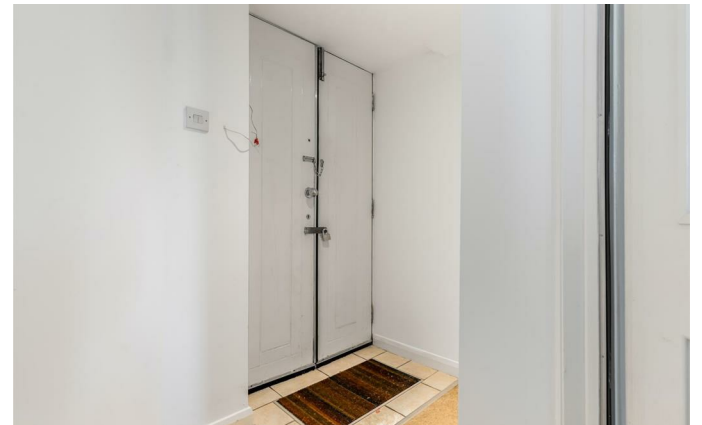
10 Walkers Court, Wishaw, ML2 9EY

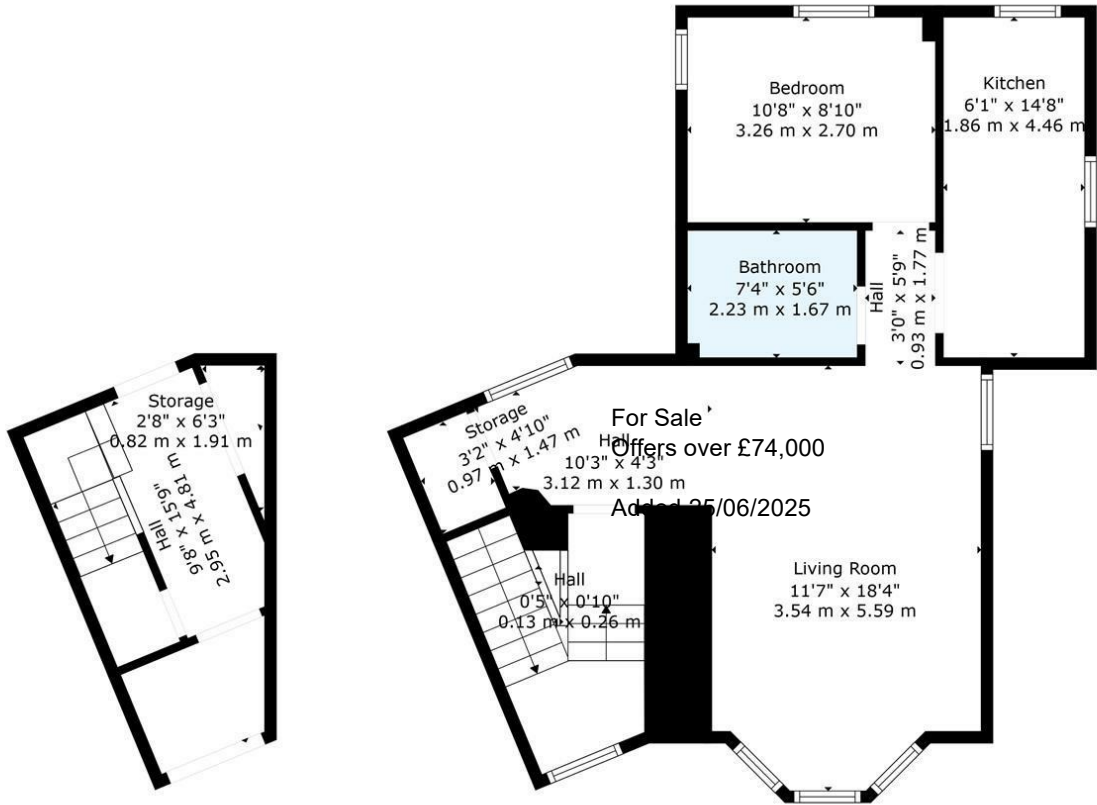
10 Walkers Court, Wishaw, ML2 9EY

Welcome to this charming one-bedroom flat located in the desirable area of Walkers Court, Newmains, Wishaw. This delightful apartment offers a perfect blend of modern living and quirky design, making it an ideal choice for first-time buyers or those seeking a cosy retreat.

As you enter the property, you will be greeted by a bright and airy living space that





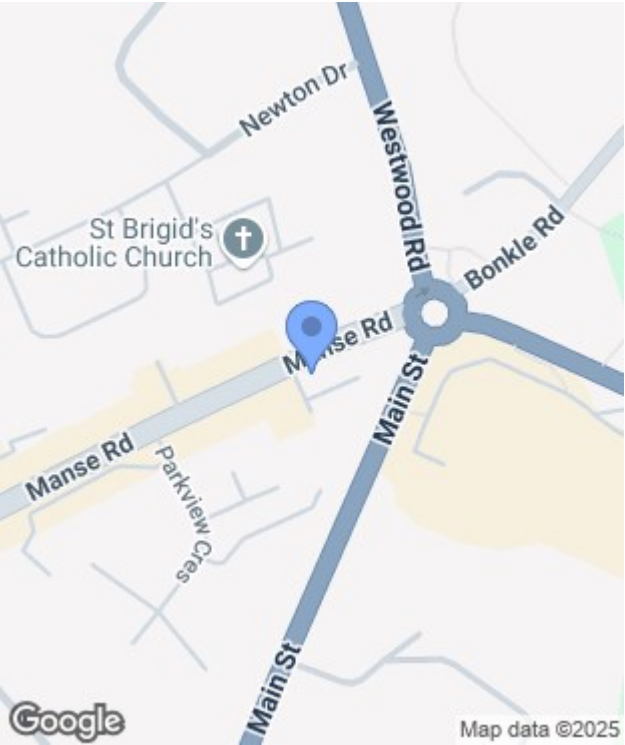


Floor 1

Floor 2

TOTAL: 727 sq. ft, 68 m2
BELOW GROUND: 116 sq. ft, 11 m2, FLOOR 2: 611 sq. ft, 57 m2
EXCLUDED AREAS: STORAGE: 22 sq. ft, 2 m2
WALLS: 83 sq. ft, 8 m2

Floor Plan Created By Cubicasa App. Measurements Deemed Highly Reliable But Not Guaranteed.



Energy Efficiency Rating		
	Current	Potential
Very energy efficient - lower running costs		
(92 plus) A		
(81-91) B		
(69-80) C		
(55-68) D		
(39-54) E		
(21-38) F		
(1-20) G		
Not energy efficient - higher running costs		
Scotland	EU Directive 2002/91/EC	

Environmental Impact (CO ₂) Rating		
	Current	Potential
Very environmentally friendly - lower CO ₂ emissions		
(92 plus) A		
(81-91) B		
(69-80) C		
(55-68) D		
(39-54) E		
(21-38) F		
(1-20) G		
Not environmentally friendly - higher CO ₂ emissions		
Scotland	EU Directive 2002/91/EC	