



5 Whittagreen Court, Motherwell, Lanarkshire ML1 5SN



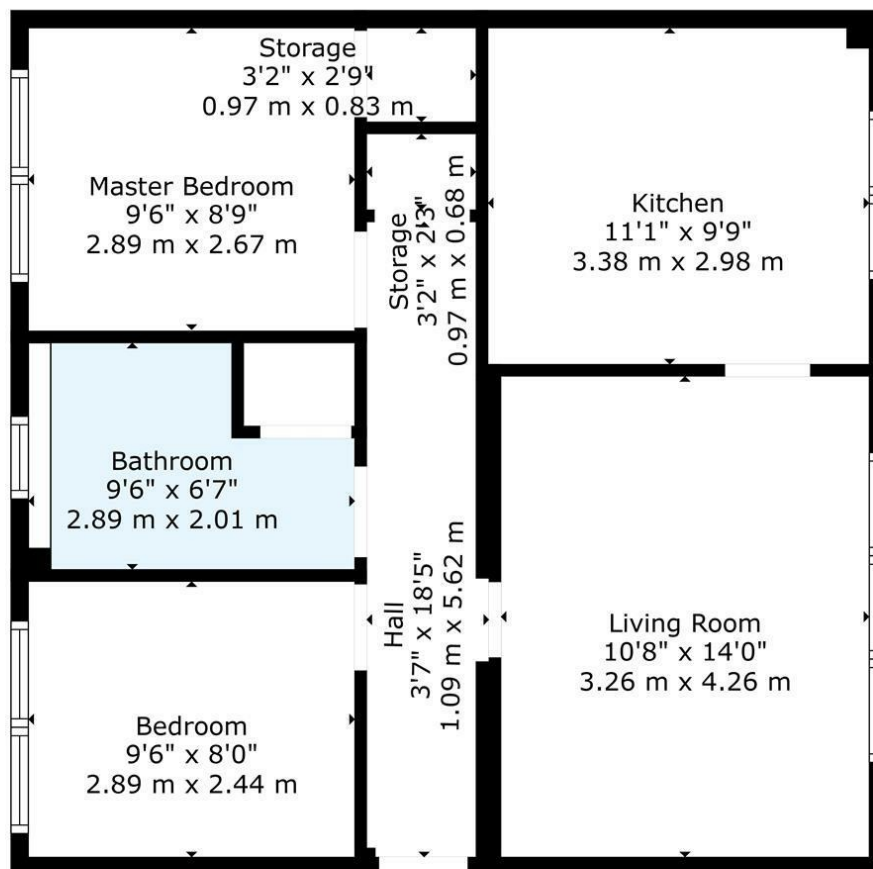
5 Whittagreen Court, Motherwell, Lanarkshire ML1 5SN

Welcome to this charming two-bedroom flat located in the desirable Whittagreen Court, Motherwell. This spacious apartment offers a comfortable living environment, perfect for individuals or small families seeking a modern home.

Upon entering, you will find a well-proportioned reception room that provides an inviting space for relaxation and entertainment. The flat features two generously sized

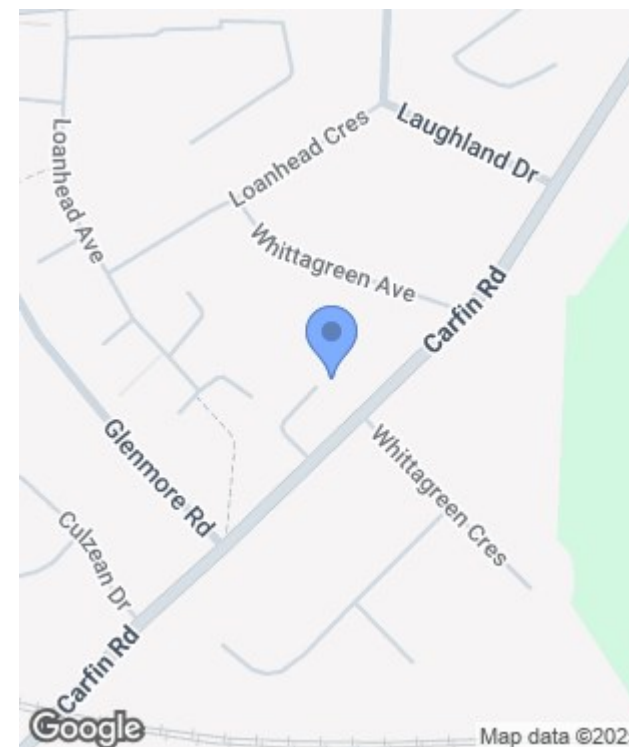






TOTAL: 571 sq. ft, 53 m2
 FLOOR 1: 571 sq. ft, 53 m2
 EXCLUDED AREAS: STORAGE: 17 sq. ft, 2 m2
 WALLS: 48 sq. ft, 4 m2

Floor Plan Created By Cubicasa App. Measurements Deemed Highly Reliable But Not Guaranteed.



Energy Efficiency Rating		
	Current	Potential
Very energy efficient - lower running costs		
(92 plus) A		
(81-91) B		
(69-80) C		
(55-68) D		
(39-54) E		
(21-38) F		
(1-20) G		
Not energy efficient - higher running costs		
Scotland	EU Directive 2002/91/EC	

Environmental Impact (CO ₂) Rating		
	Current	Potential
Very environmentally friendly - lower CO ₂ emissions		
(82 plus) A		
(61-81) B		
(40-60) C		
(21-39) D		
(12-20) E		
(1-11) F		
(1-11) G		
Not environmentally friendly - higher CO ₂ emissions		
Scotland	EU Directive 2002/91/EC	