

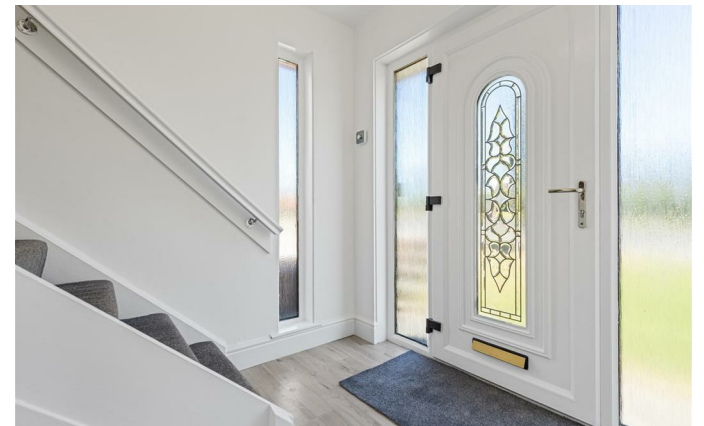


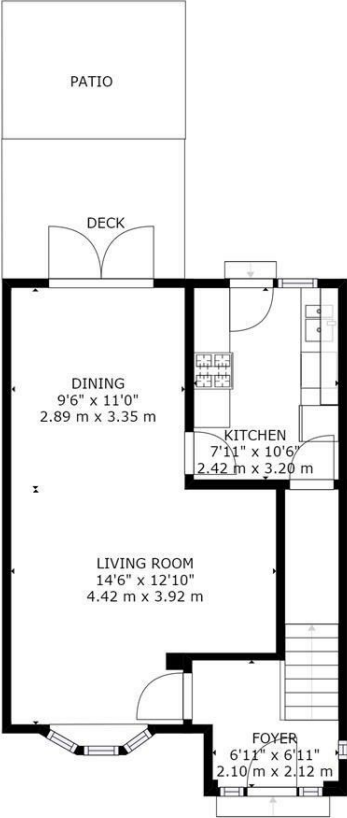
**5 Castle View, Wishaw, Lanarkshire ML2 9PQ**

## 5 Castle View, Wishaw, Lanarkshire ML2 9PQ

Empire Property are delighted to present to the market a rarely available 3 bedroom semi-detached family house set within a quiet residential area of Newmains. Nearby is local primary schools and nurseries along with local amenities and travel links. Wishaw Town Centre is nearby and hosts, restaurants, bars, and shops. Road links conveniently to the M8 and M74 with easy access to Glasgow and Edinburgh.

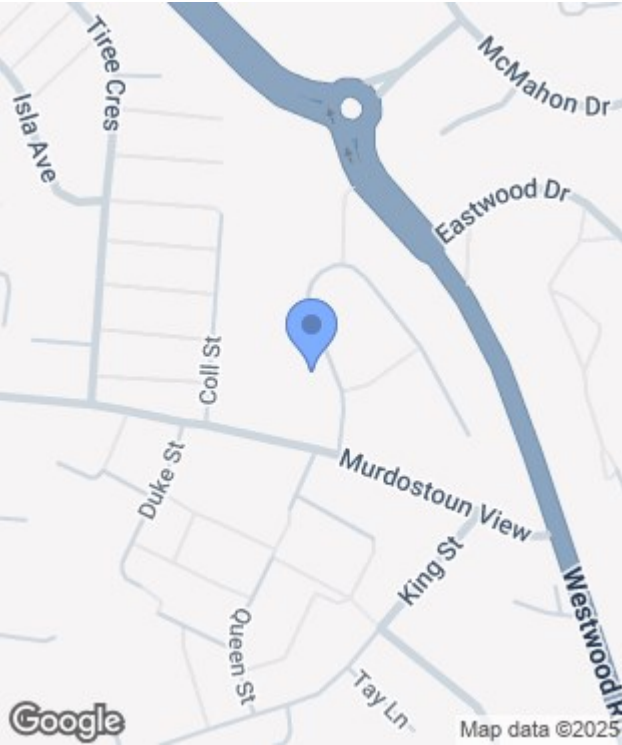






GROSS INTERNAL AREA  
FLOOR 1: 457 sq. ft, 42 m2, FLOOR 2: 407 sq. ft, 38 m2  
TOTAL: 863 sq. ft, 80 m2  
SIZES AND DIMENSIONS ARE APPROXIMATE, ACTUAL MAY VARY.

FLOOR 1



Energy Efficiency Rating		
	Current	Potential
Very energy efficient - lower running costs		
(92 plus) A		
(81-91) B		
(69-80) C		
(55-68) D		
(39-54) E		
(21-38) F		
(1-20) G		
Not energy efficient - higher running costs		
Scotland	EU Directive 2002/91/EC	

Environmental Impact (CO <sub>2</sub> ) Rating		
	Current	Potential
Very environmentally friendly - lower CO <sub>2</sub> emissions		
(02 plus) A		
(81-91) B		
(69-80) C		
(55-68) D		
(39-54) E		
(21-38) F		
(1-20) G		
Not environmentally friendly - higher CO <sub>2</sub> emissions		
Scotland	EU Directive 2002/91/EC	