



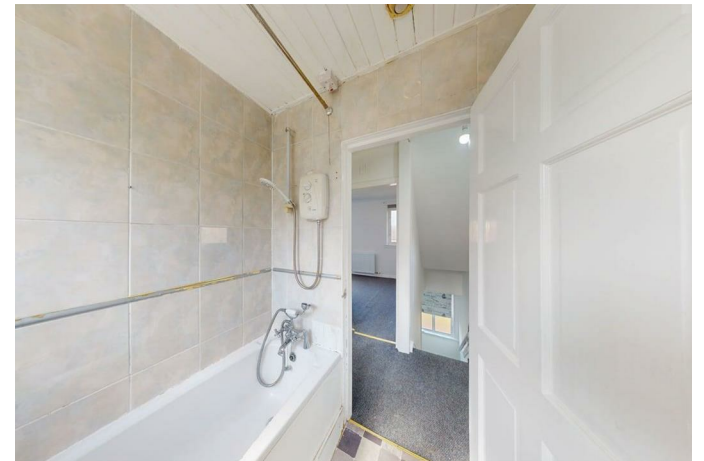
234 North Dryburgh Road, Wishaw, ML2 7HL



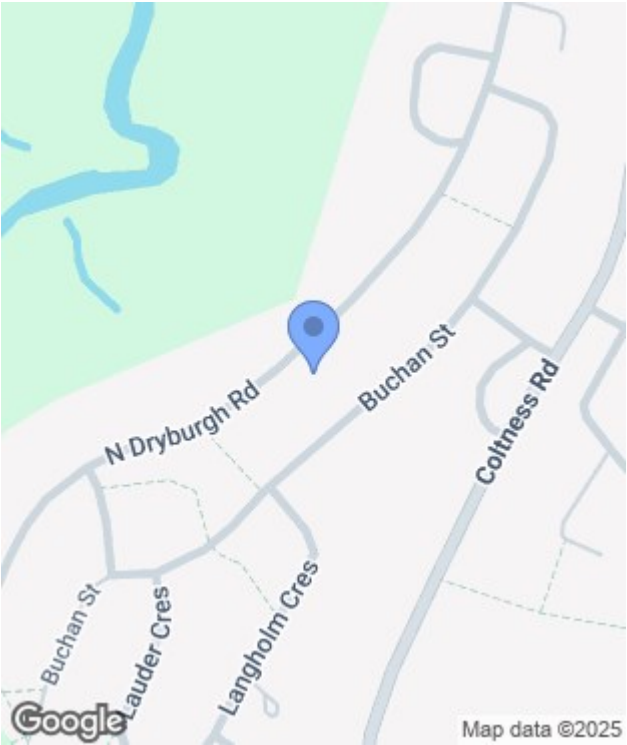
234 North Dryburgh Road, Wishaw, ML2 7HL

North Dryburgh Road, Wishaw, this delightful end terrace house presents an excellent opportunity for those seeking a two-bedroom family home. The property boasts a spacious reception room, perfect for family gatherings or entertaining guests.

While the house is in need of some upgrading, it offers a blank canvas for potential







Energy Efficiency Rating		
	Current	Potential
Very energy efficient - lower running costs		
(92 plus) A		
(81-91) B		
(69-80) C		
(55-68) D		
(39-54) E		
(21-38) F		
(1-20) G		
Not energy efficient - higher running costs		
Scotland	EU Directive 2002/91/EC	

Environmental Impact (CO ₂) Rating		
	Current	Potential
Very environmentally friendly - lower CO ₂ emissions		
(92 plus) A		
(81-91) B		
(69-80) C		
(55-68) D		
(39-54) E		
(21-38) F		
(1-20) G		
Not environmentally friendly - higher CO ₂ emissions		
Scotland	EU Directive 2002/91/EC	