

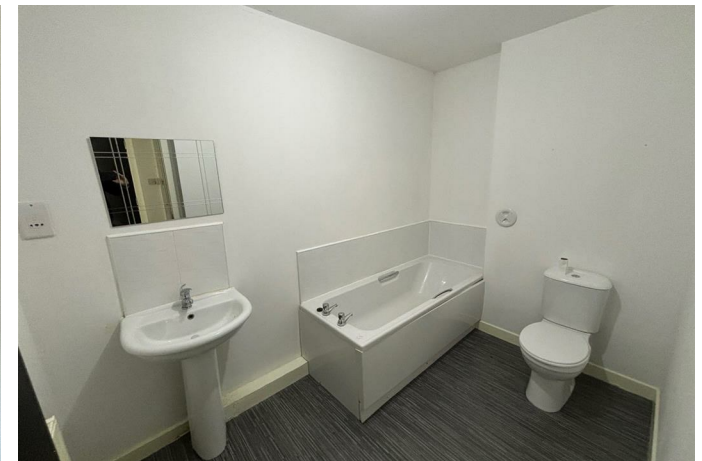


29 Wellington Street, Wishaw, ML2 7EU



29 Wellington Street, Wishaw, ML2 7EU

A rarely available ground floor apartment set within walking distance to New Lanarkshire College and all other amenities. The apartment is modern throughout and consists of entrance hallway, storage, two bedrooms with master en-suite, fitted wardrobes, open plan lounge with feature window, fully fitted kitchen. Gas central heating, private parking and double glazing.







Energy Efficiency Rating		
	Current	Potential
<i>Very energy efficient - lower running costs</i>		
(92 plus) A		
(81-91) B		
(69-80) C		
(55-68) D		
(39-54) E		
(21-38) F		
(1-20) G		
<i>Not energy efficient - higher running costs</i>		
Scotland	EU Directive 2002/91/EC	

Environmental Impact (CO ₂) Rating		
	Current	Potential
<i>Very environmentally friendly - lower CO₂ emissions</i>		
(92 plus) A		
(81-91) B		
(69-80) C		
(55-68) D		
(39-54) E		
(21-38) F		
(1-20) G		
<i>Not environmentally friendly - higher CO₂ emissions</i>		
Scotland	EU Directive 2002/91/EC	