



14 Harestone Road, WISHAW, Lanarkshire ML28DB

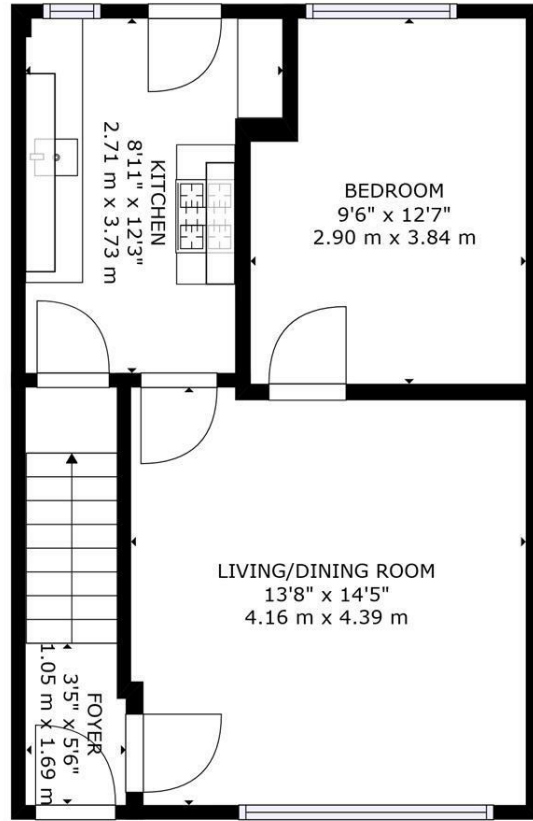


14 Harestone Road, WISHAW, Lanarkshire ML28DB

A spacious three-bed modern family home. The property has been modernised and freshly decorated. The ground floor level comprises of entrance hallway, bright open lounge, downstairs bedroom, fully fitted kitchen, storage, rear gardens, upper level two spacious bedrooms, family bathroom with three piece suite and separate shower cubicle, gas central heating, front garden with parking.







TOTAL: 940 sq. ft, 88 m2
 FLOOR 1: 469 sq. ft, 44 m2, FLOOR 2: 471 sq. ft, 44 m2

SIZES AND DIMENSIONS ARE APPROXIMATE, ACTUAL MAY VARY.

FLOOR 1



Energy Efficiency Rating		Current	Potential
<i>Very energy efficient - lower running costs</i>			
(92 plus) A			
(81-91) B			
(69-80) C			
(55-68) D			
(39-54) E			
(21-38) F			
(1-20) G			
<i>Not energy efficient - higher running costs</i>			
Scotland	EU Directive 2002/91/EC		

Environmental Impact (CO ₂) Rating		Current	Potential
<i>Very environmentally friendly - lower CO2 emissions</i>			
(92 plus) A			
(81-91) B			
(69-80) C			
(55-68) D			
(39-54) E			
(21-38) F			
(1-20) G			
<i>Not environmentally friendly - higher CO2 emissions</i>			
Scotland	EU Directive 2002/91/EC		

T: 01698 364100