



111 Westwood Road, Wishaw, ML2 9EL

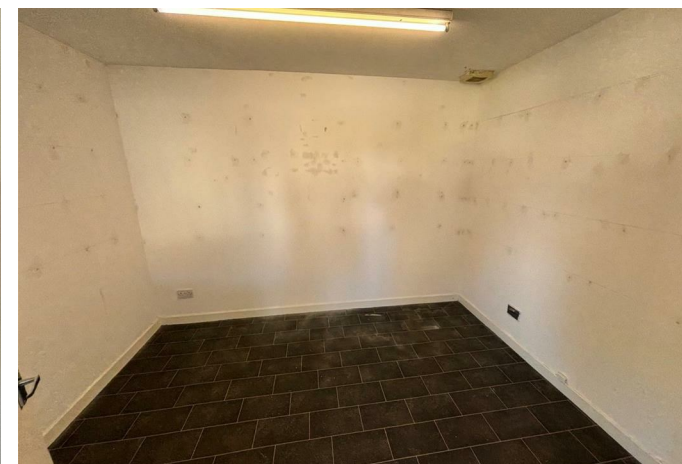
111 Westwood Road, Wishaw, ML2 9EL

Commercial unit to rent on the busy Westwood Road, Newmains.

The property comprises reception area, 3 separate rooms, kitchen and bathroom.

It is an ideal unit for a salon or office premises.

Please get in touch for more details or book a viewing.







Energy Efficiency Rating		
	Current	Potential
Very energy efficient - lower running costs		
(92 plus) A		
(81-91) B		
(69-80) C		
(55-68) D		
(39-54) E		
(21-38) F		
(1-20) G		
Not energy efficient - higher running costs		
Scotland	EU Directive 2002/91/EC	

Environmental Impact (CO ₂) Rating		
	Current	Potential
Very environmentally friendly - lower CO ₂ emissions		
(92 plus) A		
(81-91) B		
(69-80) C		
(55-68) D		
(39-54) E		
(21-38) F		
(1-20) G		
Not environmentally friendly - higher CO ₂ emissions		
Scotland	EU Directive 2002/91/EC	