



21 Sloy Street, Wishaw, Lanarkshire ML2 0JS
Offers over £76,000



Empire Property are delighted to present to the market a rarely available two bed mid terrace home conveniently located close to excellent travel links, Thornlie Primary School and local amenities.

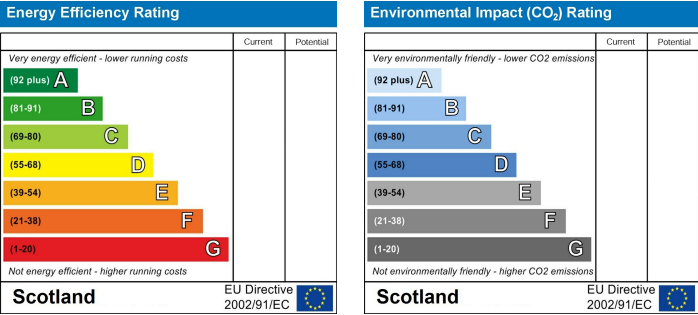
Ground floor of the property consists of; welcoming hallway, large bright living room with dining area and electric fire, large kitchen with excellent storage space and access to the private back garden.

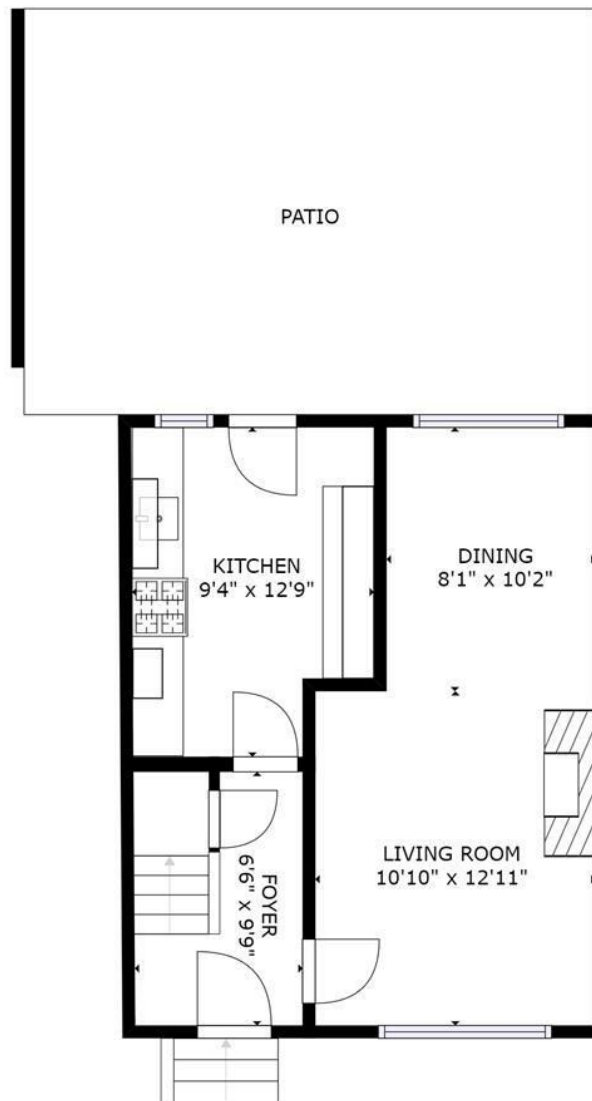
First floor of the property houses two double bedrooms both with fitted wardrobes and a family bathroom.

The property further benefits from driveway, large back garden, double glazing and gas central heating.

This is an excellent opportunity for first time buyers or investor.

****Mortgage advice available****





FLOOR 1

GROSS INTERNAL AREA
 FLOOR 1: 412 sq ft, FLOOR 2: 404 sq ft
 TOTAL: 816 sq ft
 SIZES AND DIMENSIONS ARE APPROXIMATE, ACTUAL MAY VARY.



2 Stewarton Street, Wishaw, Scotland, ML2 8AN

Tel: 01698 364100

contact@empire-property.co.uk www.empire-property.co.uk



