

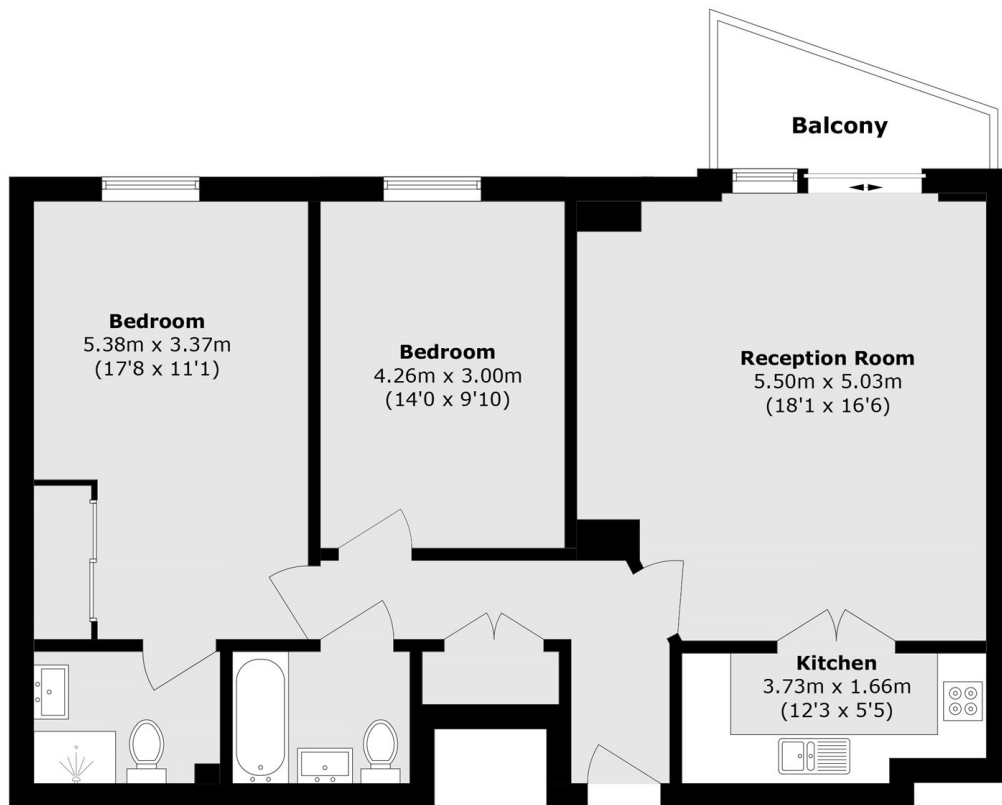


## ST. GEORGE WHARF, SW8

**£725,000**

The property offers a large balcony boasting stunning river views. The apartment comprises of two double bedrooms, with a master bedroom also benefiting from an en suite.

- 24 Hr Concierge
- Private Balcony
- River Views
- On-site Gym
- 875 Sq/Ft
- Local Amenities



Total area (approx.): 81.6 sq. m (878.3 sq. ft)

Balcony area (approx.): 4.1 sq. m (44.1 sq. ft)

**LiFE RESIDENTIAL**

11 Flagstaff House, London,  
SW8 2LZ

Sales: 020 7476 1408

Lettings: 020 7582 7989

Energy Rating: . We aim to make our particulars both accurate and reliable. However they are not guaranteed; nor do they form part of an offer or contract. If you require clarification on any points then please contact us, especially if you're traveling some distance to view. Please note that appliances and heating systems have not been tested and therefore no warranties can be given as to their good working order.