







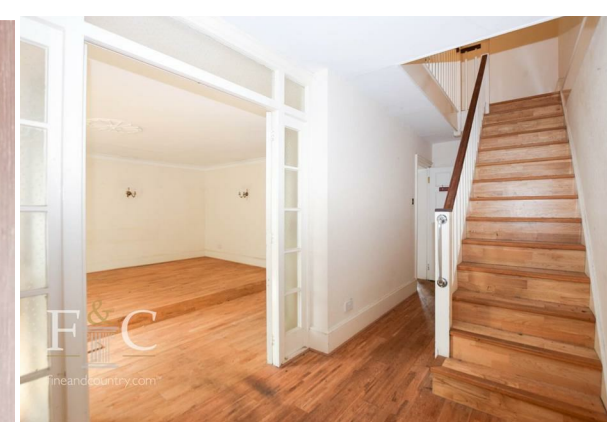
fineandcountry.com™

Turkey Street | Enfield | EN1 4RJ

A charming grade II listed residence in a historic conservation area, Steeped in history and character, this exceptional home dates back to the late 1800s–early 1900s and offers a rare opportunity to acquire a truly distinctive period property. This home boasts an elegant blend of architectural charm and outstanding potential throughout. Behind its timeless façade lies a wealth of original features, from high ceilings and sash windows to period fireplaces and intricate detailing – all echoing the craftsmanship of a bygone era. The ground floor comprises of a grand entrance hall, a spacious living room, kitchen/diner and a W/C. On the first floor there are three double bedrooms and a bathroom. Outside there is a front paved garden, a garage en-bloc providing parking and a lengthy, mature rear garden boasting a superb 'L shape plot'. The property is ideally located for commuters and nature lovers alike, the home is within close proximity to both the A10 and M25, as well as Turkey Street Train Station. The beautiful grounds of Myddelton House Gardens and Capel Manor are also just a short stroll away, offering picturesque walks and weekend enjoyment on your doorstep. This is more than just a home – it's a piece of local heritage with huge potential for sympathetic alteration or extension, subject to the relevant permissions. making it an ideal choice for discerning buyers looking to create something truly special. TO BE SOLD CHAIN FREE.

- Grade II Listed Residence
- Built Between The Late 1800s And Early 1900s
- Retains Original Features
- Grand Entrance Hall & Spacious Living Room
- Three Double Bedrooms And A Bathroom
- Kitchen/Diner And Ground Floor W/C
- Mature L-Shaped Garden & Garage En-Bloc
- Excellent Access To A10, M25 And Train Links
- Near Myddelton House Gardens And Capel Manor





F&C
fineandcountry.com™


F&C
fineandcountry.com™

F&C
fineandcountry.com™

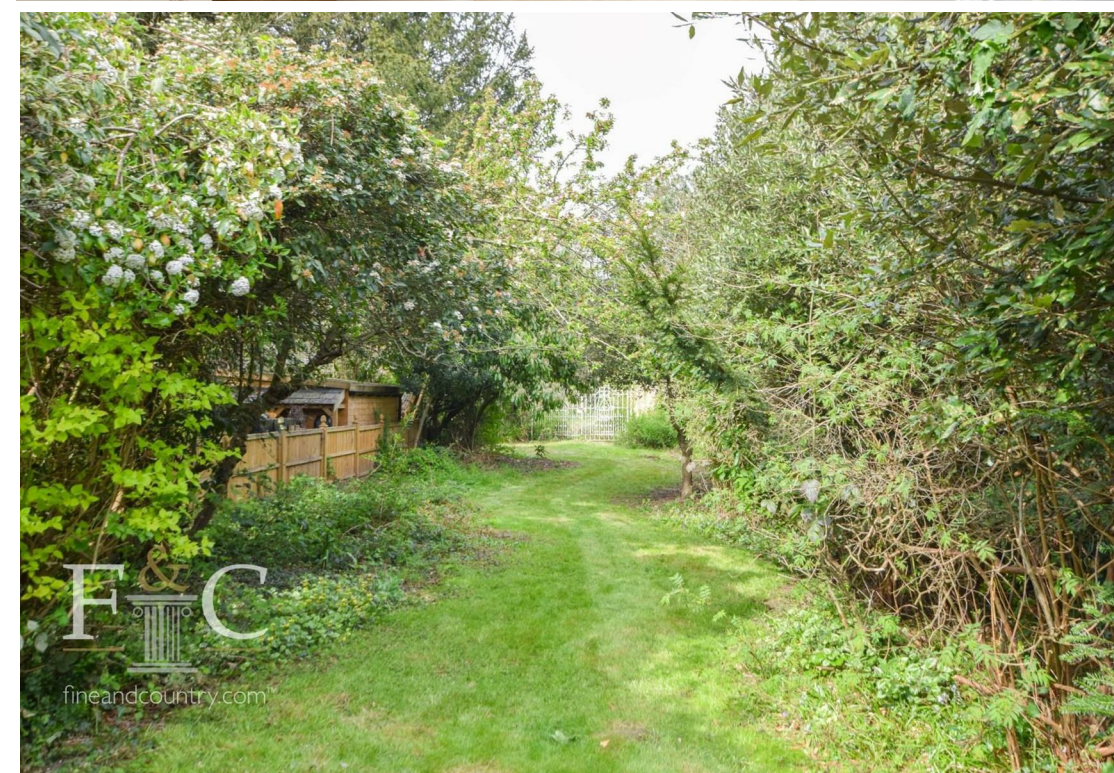
F&C
fineandcountry.com™

F&C
fineandcountry.com™

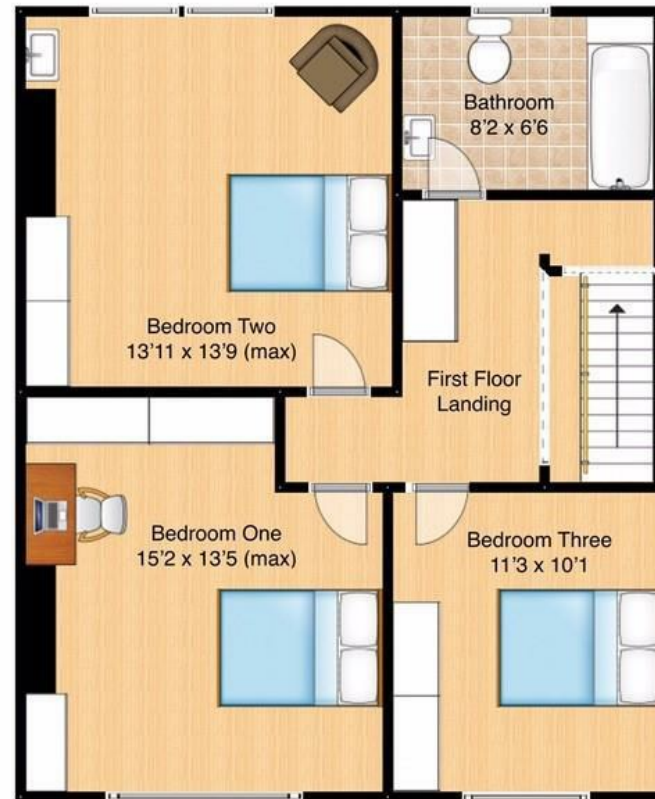
Disclaimers: 1. In-line with money laundering regulations (MLR), purchasers will be asked to produce identification documentation. 2. These particulars do not constitute part or all of an offer or contract. 3. Measurements on any of our documentation is supplied for guidance only; as such must be considered incorrect. Potential buyers are advised to recheck measurements before committing to any expense. 4. The property - The agency has not tested; any apparatus, equipment, fixtures or services. It is in the buyer's interest to check the working condition of the aforementioned. Nothing concerning the type of construction or condition of the structure is implied from the agents' photographs. 5. EPC information - is available upon request. 6. We are not able to offer opinion, either written or verbal on the content of reports. This must be obtained from your legal representative, or relevant qualified professional. 7. Whilst care is taken in the preparation of our information, a buyer should ensure that their legal representative confirms as soon as possible all matters relating to; The title including the extent and boundaries of the property and other important matters before exchange of contracts. All interested party/parties should inspect the property prior to exchange of contracts.

 3
  1
  2
  D

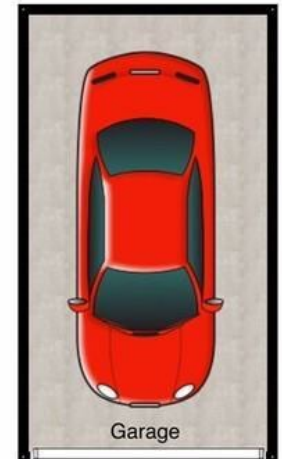
Tenure: Freehold
Council: Enfield
Tax Band: G



Turkey Street, Enfield, Greater London



FINE & COUNTRY



This floorplan is for guidance only and may not be accurate. Fine and Country have added the floor coverings and furniture as a visual guide only and items shown will not be included. This floorplan is covered by the Copyright Act 1988 and must not be reused or edited without permission from Fine and Country Lea Valley.



Fine & Country Cheshunt

1 High Street
Cheshunt
Hertfordshire EN8 0TA
Tel: 01992 631314
cheshunt@fineandcountry.com
www.fineandcountry.co.uk

Fine & Country Hoddesdon

37 High Street
Hoddesdon
Hertfordshire EN11 8TA
Tel: 01992 449 500
hoddesdon@fineandcountry.com
www.fineandcountry.co.uk

