



FINE & COUNTRY

Nursery Gardens | Goffs Oak | EN7 6RZ | £5,750 Per Month





F&C

fineandcountry.comTM

Nursery Gardens | Goffs Oak | EN7 6RZ

Welcome to this stunning 5-bedroom detached house in the sought-after St James area of Goffs Oak. This luxurious family home, offers a perfect blend of space, comfort, and modern amenities.

As you step inside, you are greeted by not just one, but three spacious reception rooms, providing ample space for entertaining guests or simply relaxing with your family. The property boasts 5 generously sized bedrooms, including 2 bedroom suites complete with dressing rooms and en-suites, offering a touch of luxury and privacy.

One of the highlights of this property is the high-tech features it offers, including CCTV for added security and a garage conversion that has been transformed into a large family/playroom with direct access to the outside. Imagine the endless possibilities this space holds for quality family time and entertainment.

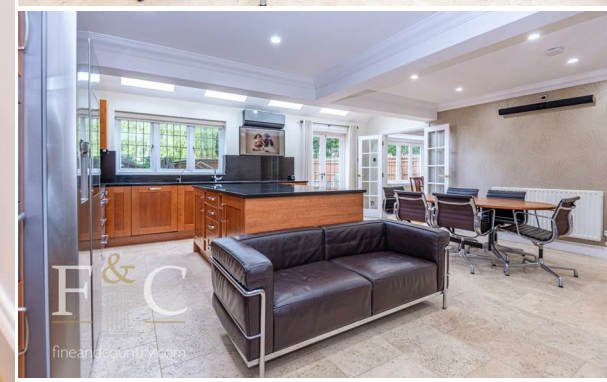
The heart of this home is undeniably the large fully equipped kitchen and family room, designed to be the hub of daily activities with designated dining, sitting, and preparation areas. In addition to the informal dining space, there is a large dining room capable of accommodating a 12-14 seat table, perfect for hosting memorable dinner parties or special occasions.

Additionally, this property comes with modern conveniences such as air-conditioning to keep you comfortable year-round, an outside kitchen for al fresco dining, and parking for 2 vehicles. The property also features 3 further bedrooms, ensuring plenty of space for a growing family or visiting guests.

If you are looking for a spacious, modern, and well-equipped family home in a desirable location, this property is a must-see. Book your viewing today.

- Five Bedrooms 2 with dressing rooms and en-suites
- Three Bathrooms
- Four Reception Rooms
- Superb Kitchen / Family Breakfast Room
- Large Driveway
- Landscaped Gardens
- Gas Central Heating
- Great Location
- Council Tax Band G Broxbourne Borough Council

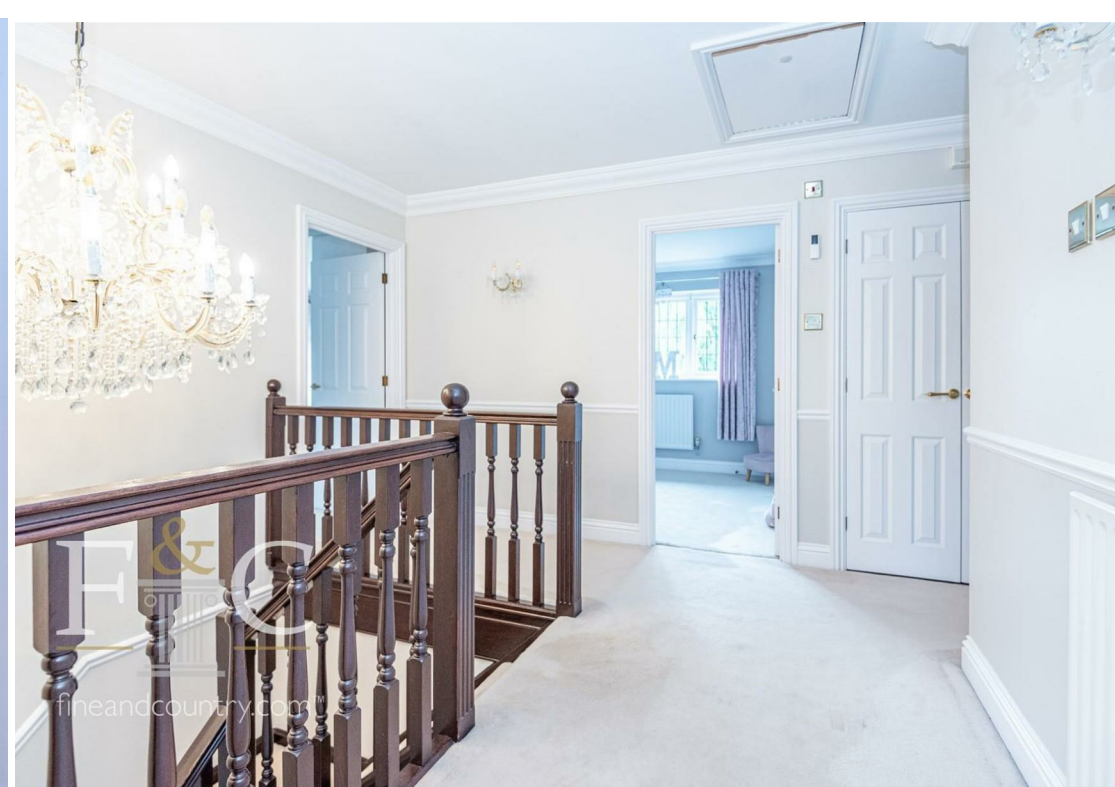




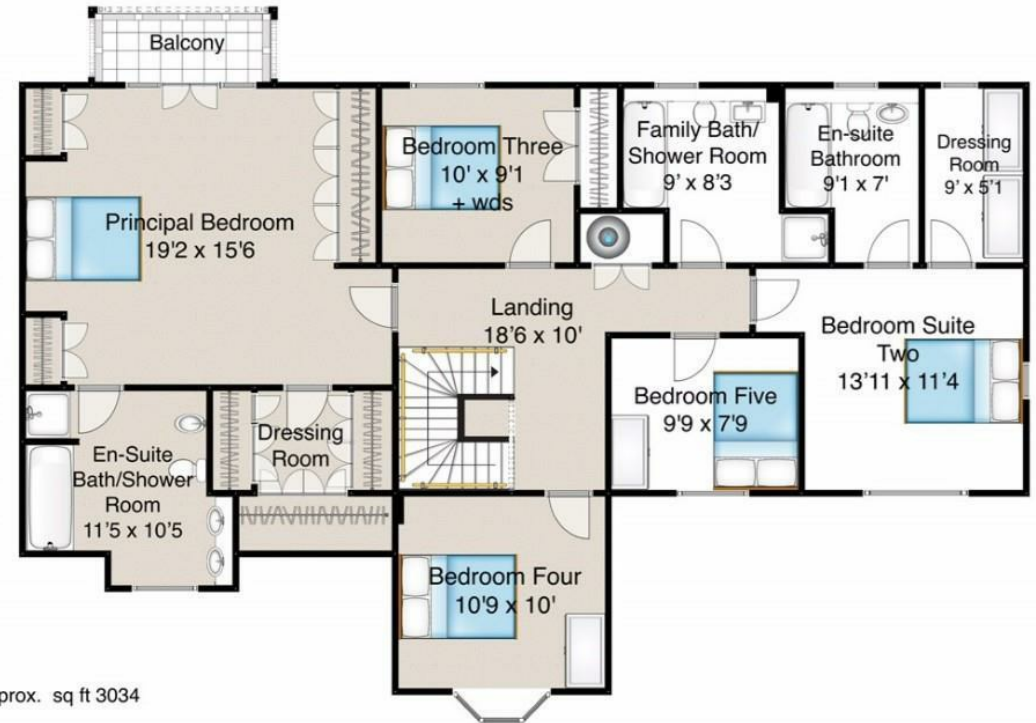
Disclaimers: 1. In-line with money laundering regulations (MLR), purchasers will be asked to produce identification documentation. 2. These particulars do not constitute part or all of an offer or contract. 3. Measurements on any of our documentation is supplied for guidance only; as such must be considered incorrect. Potential buyers are advised to recheck measurements before committing to any expense. 4. The property - The agency has not tested; any apparatus, equipment, fixtures or services. It is in the buyer's interest to check the working condition of the aforementioned. Nothing concerning the type of construction or condition of the structure is implied from the agents' photographs. 5. EPC information - is available upon request. 6. We are not able to offer opinion, either written or verbal on the content of reports. This must be obtained from your legal representative, or relevant qualified professional. 7. Whilst care is taken in the preparation of our information, a buyer should ensure that their legal representative confirms as soon as possible all matters relating to; The title including the extent and boundaries of the property and other important matters before exchange of contracts. All interested party/parties should inspect the property prior to exchange of contracts.

 5
  3
  3
  D

Tenure:
Council: Borough of Broxbourne
Tax Band: G



Nursery Gardens
Goffs Oak
Hertfordshire



Total Approx. sq ft 3034

This floor plan is for guidance only and may not be accurate. Fine and Country have added furnishings as a visual guide only and will not be included in any contract. The floor plan is covered by the Copyright Act 1988 and can not be reused or edited without the consent of Fine and Country Hoddesdon.



Fine & Country Cheshunt

1 High Street
Cheshunt
Hertfordshire EN8 0TA
Tel: 01992 631314
cheshunt@fineandcountry.com
www.fineandcountry.co.uk

Fine & Country Hoddesdon

37 High Street
Hoddesdon
Hertfordshire EN11 8TA
Tel: 01992 449 500
hoddesdon@fineandcountry.com
www.fineandcountry.co.uk

