

Whitakers

Estate Agents



5 King Albert Chambers, 61-69 Jameson Street, Hull, HU1 3JF

Asking Price £140,000

No Onward Chain!

This immaculate duplex apartment is offered to the market with no onward chain, situated in a prime central location, well placed to access all the amenities the city centre has to offer and boasts great transport links around the city and beyond.

The main features include - entrance, 17' open plan fitted kitchen / diner with some appliances, two double bedrooms (master en suite) together with the well appointed family bathroom suite.

The first floor boasts a 17' lounge with roof window and door that leads out to the roof terrace to enjoy the sun in the warmer months.

This period property still retains some original features giving this contemporary apartment a perfect balance of old and new.

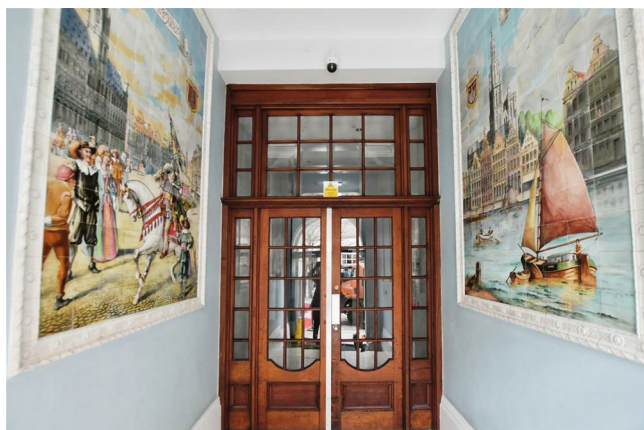
Early viewings are advised.

The Accommodation Comprises



Access provided by communal lift and stairs to the first floor.

Entrance Hall

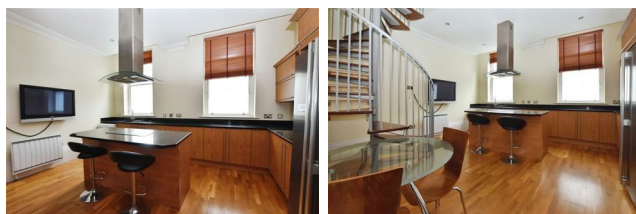


Wooden front door, wooden flooring and electric heater.

Inner Hall

Wooden flooring, electric heater and a storage cupboard.

Kitchen/Diner 12'2 x 16' (3.71m x 4.88m)



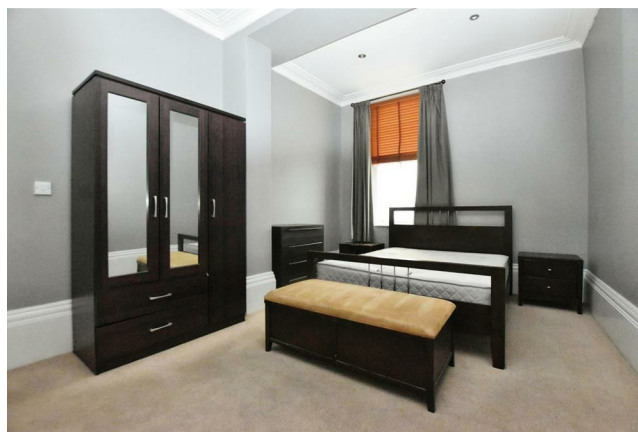
Two sash windows, wooden flooring and electric heater. Fitted with a range of base, drawer and wall mounted units with quartz worktops, sink unit, central island with oven, hob and cooker hood over and a integrated dishwasher. Spiral staircase leading to the first floor.

Bathroom



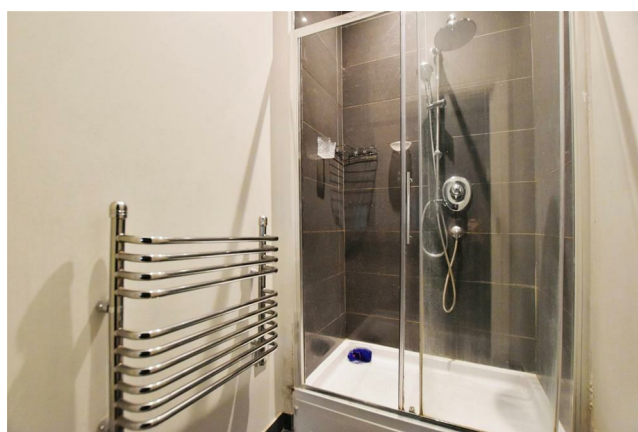
Electric heating. Tiled flooring and partially tiled walls and fitted with a panelled bath, vanity sink and a low flush W.C.

Bedroom One 16'9 x 11'2 (5.11m x 3.40m)



Sash window, electric heater and door leading to the en-suite.

En-Suite



Electric heater. Tiled flooring and fitted with a walk in enclosed mixer shower.

Bedroom Two 12'8 x 11'0 (3.86m x 3.35m)



Sash window and electric heater.

First Floor

Lounge 17'1 x 16'5 (5.21m x 5.00m)



UPVC double glazed French doors leading to the communal roof terrace and a UPVC double glazed window and an additional roof window.

Tenure

The property is leasehold.

Council Tax

Council Tax Band C- Hull City Council

Material Information

Construction - Brick

Conservation Area - Jameson Street

Flood Risk - Low

Mobile Coverage / Signal - EE/ Vodafone / Three / O2

Broadband - Basic 20 Mbps Ultrafast 1000 Mbps

Coastal Erosion - N/A

Coalfield or Mining Area - N/A

Additional products and services

Whitakers Estate Agents offer additional services via third parties: surveying, financial services, investment insurance, conveyancing and other services associated with the sale and purchase of your property.

We are legally obliged to advise a vendor of any additional services a buyer has applied to use in connection with their purchase. We will do so in our memorandum of sale when the sale is instructed to both parties solicitors, the vendor and the buyer.

Disclaimer

Services, fittings & equipment referred to in these sale particulars have not been tested (unless otherwise stated) and no warranty can be given as to their condition. Please note that all measurements are approximate and for general guidance purposes only.

Other services

Whitakers Estate Agents offer additional services via third parties: surveying, financial services, investment insurance, conveyancing and other services associated with the sale and purchase of your property.

We are legally obliged to advise a vendor of any additional services a buyer has applied to use in connection with their purchase. We will do so in our memorandum of sale when the sale is instructed to both parties solicitors, the vendor and the buyer.

Sales valuations

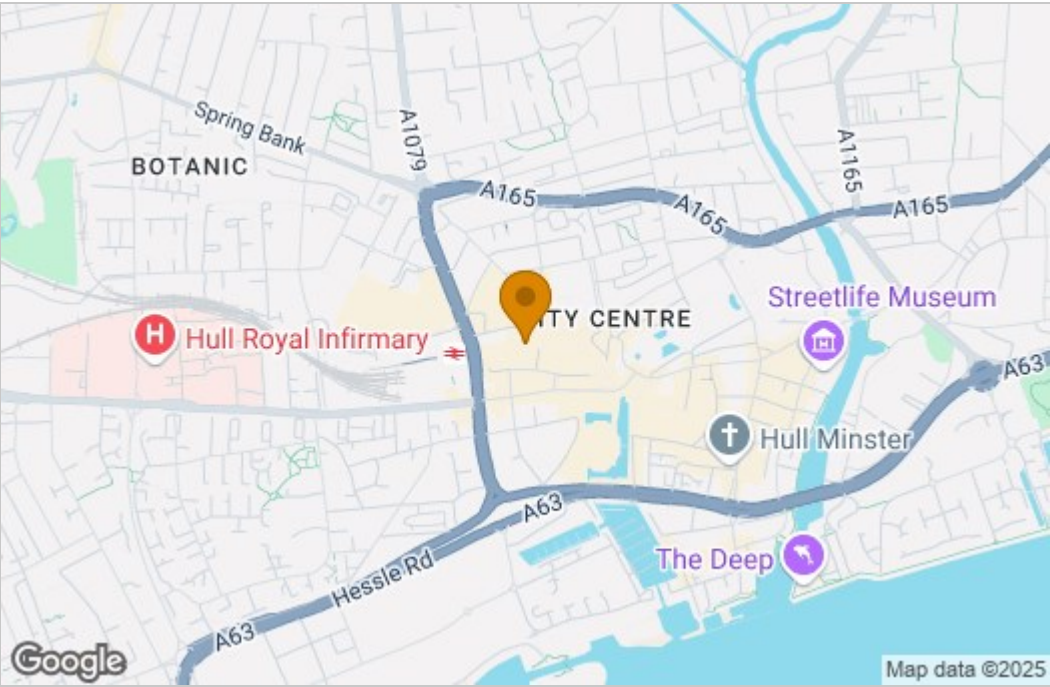
We offer a free sales valuation service, as an Independent company we have a strong interest in making sure you achieve a quick sale. If you need advice on any aspect of buying or selling please do not hesitate to ask.

Floor Plan

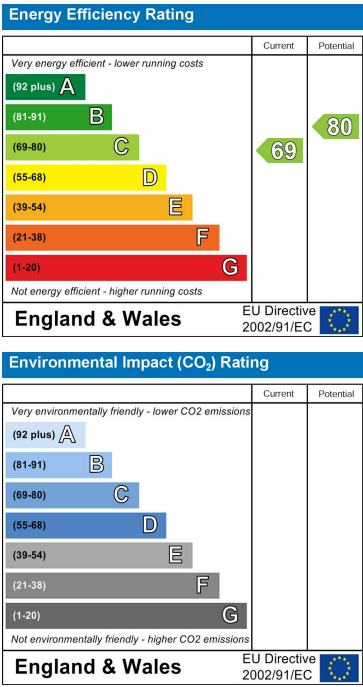


Please note floorplans are for guidance only and are intended to give a general impression of the property.
Plan produced using PlanUp.

Area Map



Energy Efficiency Graph



These particulars, whilst believed to be accurate are set out as a general outline only for guidance and do not constitute any part of an offer or contract. Intending purchasers should not rely on them as statements of representation of fact, but must satisfy themselves by inspection or otherwise as to their accuracy. No person in this firms employment has the authority to make or give any representation or warranty in respect of the property.