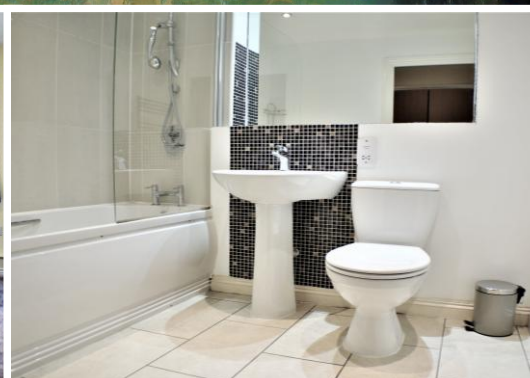




PM ESTATES

Property Sales & Lettings



Riverside Wharf

Bishops Stortford, Hertfordshire, CM23 3GN

£1,750PCM

www.pm-estates.co.uk

Riverside Wharf

Bishops Stortford, Hertfordshire, CM23 3GN

Overview

- Modern Apartment
- Exceptionally Large Living Area
- High Gloss Fully Fitted Kitchen
- Integrated Appliances
- Access to a Private Terrace Area
- Direct River Views
- Two Double Bedrooms
- Family Sized Bathroom and En-Suite
- Town Centre Location
- Close Proximity to Rail Station
- Energy Rating C
- Council Tax Band C



Description

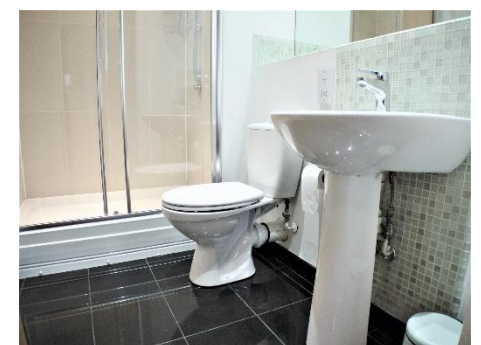
One of the best internally decorated apartments in this sought-after development, this property is available for immediate rental and is perfectly suited for clients looking to take advantage of the town's best features.

This is emphasized within a vast open plan living area which contains a designer high gloss black kitchen with integrated appliances including a dishwasher and is completed with oak colored wood style flooring.

The living area is a true reflection of modern day living and has enough space for a separated dining area. This coupled with access to an exceptionally large private decked terrace with direct river views enhances the social opportunities that this apartment has to offer.

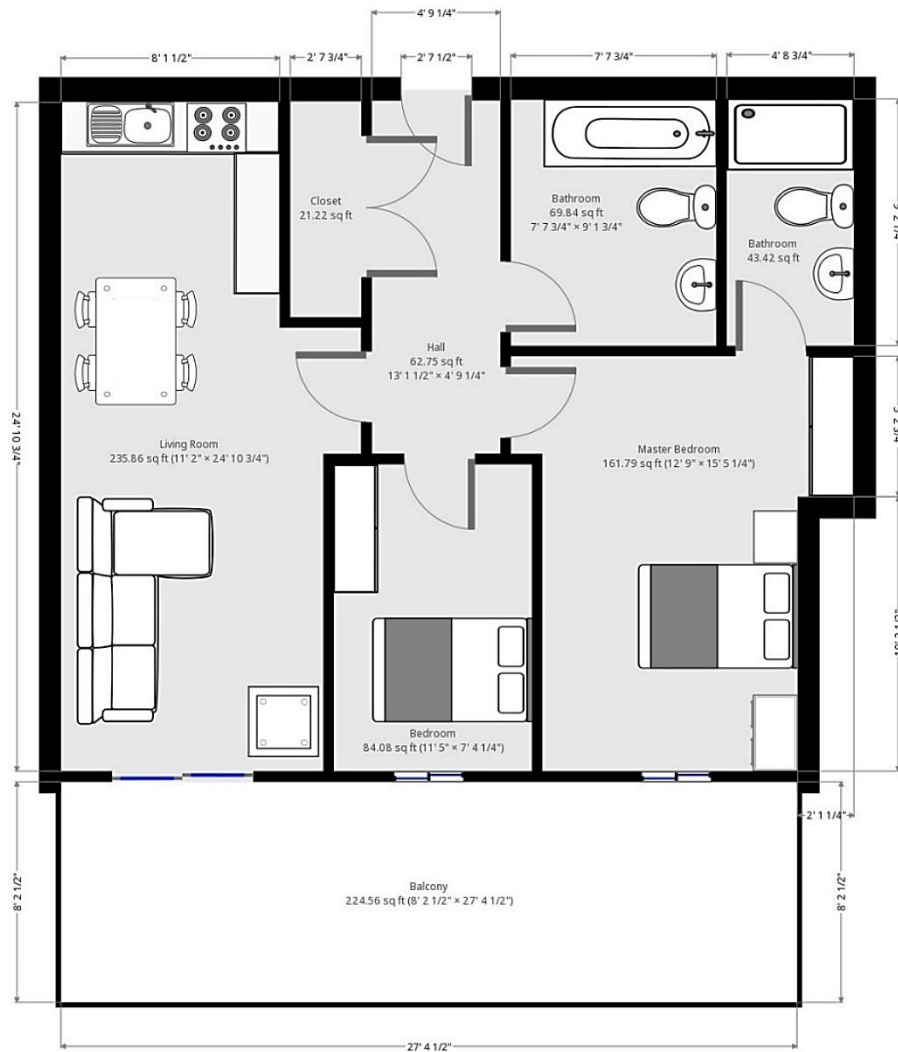
Both bedrooms are double in size with the master featuring a built in double mirrored wardrobe and access to an en-suite shower room. Both this shower room and the family size bathroom have been modified from the others within the development and have had feature colored mosaic tiles laid.

The property is located within the town centre whereby you can access the mainline train station which offers services to London Liverpool Street, Stansted Airport and Cambridge. Riverside Wharf benefits from being within proximity of Nuffield Fitness and Wellbeing Gym, Cinema Complex, Bowling Alley, Sports Bar and various Coffee shops, bars and restaurants offering a diverse cosmopolitan atmosphere.



Score	Energy rating	Current	Potential
92+	A		
81-91	B		81 B
69-80	C	80 C	
55-68	D		
39-54	E		
21-38	F		
1-20	G		

Floor Plan



7 Riverside Walk, South Street, Bishop's Stortford, Herts CM23 3AG

Tel: 01279 654646

Email: info@pm-estates.co.uk

www.pm-estates.co.uk

PM Estates wish to advise prospective purchasers that we have not checked the services or appliances. The sales particulars have been prepared as a guide only; any floor-plan or map is for illustrative purposes only. PM Estates, for themselves and for the vendors or lessors of this property whose agents they are give notice that: the particulars have been produced in good faith; do not constitute any part of a contract; no person in the employment of PM Estates has any authority to make or give any representation of warranty in relation to this property.

P820