



## Tanners Wharf

Bishops Stortford, Hertfordshire, CM23 3FE

£1,650<sub>PCM</sub>



# Tanners Wharf

Bishops Stortford, Hertfordshire, CM23 3FE

## Overview

- Third Floor Apartment
- Open-Plan Living Area
- Two Double Bedrooms
- Fitted Kitchen with Appliances
- Family Sized Tiled Bathroom
- Ensuite Shower Room
- Private Balcony
- Offered Unfurnished
- Walking Distance to Town Centre
- Energy Rating B
- Council Tax Band C



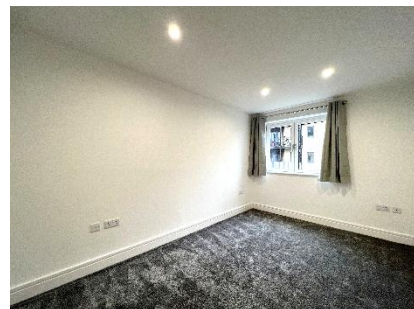
## Description

PM Estates are pleased to introduce this third-floor contemporary apartment within the popular Tanners Wharf Development of Bishops Stortford.

The property comprises of a large open plan living area, leading onto a private balcony area which overlooks the communal gardens, in addition the kitchen area is complimented with fitted wall and base units finished in a high gloss finishing, including granite worktops and integrated appliances, with a stylish breakfast bar area.

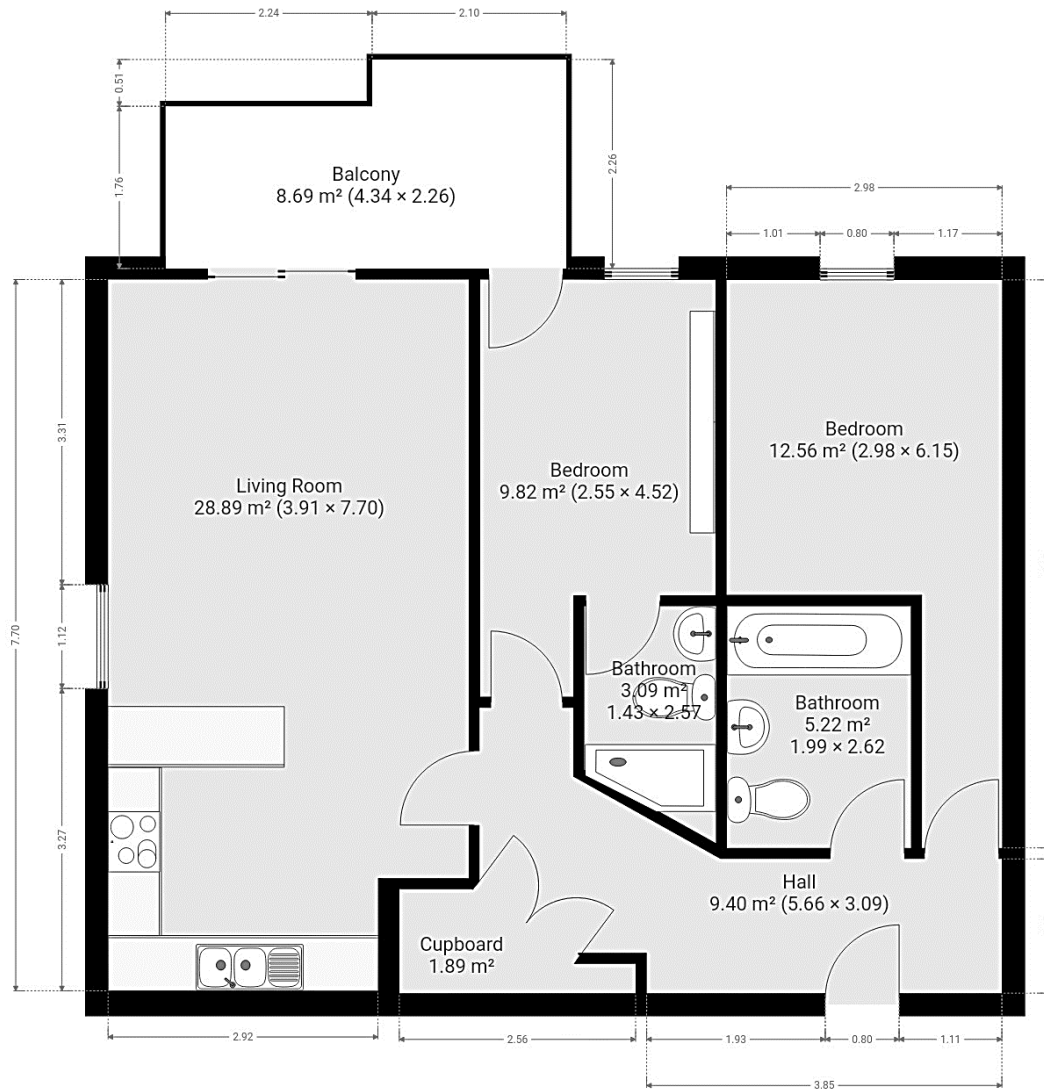
Offered unfurnished and immaculately presented throughout with modern fixtures and fittings, there is also a family sized fully tiled bathroom with fitted wall and floor ceramic tiles, including an ensuite shower room adjacent to the master bedroom.

The Tanners Wharf Development is renowned for its high-quality finish and close proximity to Bishops Stortford Town Centre. The development is a 5-minute walk to the mainline rail station which offers direct services to London Liverpool Street, Stansted Airport and Cambridge, making this an ideal property for commuters and airport staff.



Score	Energy rating	Current	Potential
92+	A		
81-91	B	81 B	83 B
69-80	C		
55-68	D		
39-54	E		
21-38	F		
1-20	G		

# Floor Plan



7 Riverside Walk, South Street, Bishop's Stortford, Herts CM23 3AG

Tel: 01279 654646

Email: [info@pm-estates.co.uk](mailto:info@pm-estates.co.uk)

[www.pm-estates.co.uk](http://www.pm-estates.co.uk)

PM Estates wish to advise prospective purchasers that we have not checked the services or appliances. The sales particulars have been prepared as a guide only; any floor-plan or map is for illustrative purposes only. PM Estates, for themselves and for the vendors or lessors of this property whose agents they are give notice that: the particulars have been produced in good faith; do not constitute any part of a contract; no person in the employment of PM Estates has any authority to make or give any representation of warranty in relation to this property.

P820

[www.pm-estates.co.uk](http://www.pm-estates.co.uk)