



# PM ESTATES

Property Sales & Lettings



## Riverside Wharf

Bishops Stortford, Hertfordshire, CM23 3GP

£1,800<sub>PCM</sub>

[www.pm-estates.co.uk](http://www.pm-estates.co.uk)

# Riverside Wharf

Bishops Stortford, Hertfordshire, CM23 3GP

## Overview

- Top Floor Apartment
- Three Double Bedrooms
- Family Sized & Ensuite Tiled Bathrooms
- Open-Plan Light & Airy Living Area
- Sleek Dark Oak Two-Tone Fitted Kitchen
- Integrated Appliances Inclusive of Dishwasher
- Town Centre Location
- Short 2-Minute Walk to Mainline Rail Station
- Feature Window with Town Centre Views
- Offered Furnished
- Energy Rating: B
- Council Tax Band: C



## Description

PM Estates are pleased to introduce this top floor three-bedroom apartment to the rental market. This furnished property is situated within the locally renowned and in high demand, Riverside Wharf Development located in the very heart of Bishops Stortford town centre.

The development itself is just a stones' throw away from the mainline rail station which is just a 2-minute walk door-to-door. The Bishops Stortford rail station offers direct services into London Liverpool Street, Cambridge City Centre and Stansted Airport. The development itself inarguably offers itself to airport workers and city commuters alike with-it convenient positioning and quality of finish throughout.

This spacious apartment is home to a large and open plan living area home to a fully fitted dark oak effect two-tone kitchen with integrated appliances inclusive of a dishwasher. This bright and airy living space is complete with a large picture style window overlooking the town centre, light oak wood style flooring and boasts feature vaulted ceilings.

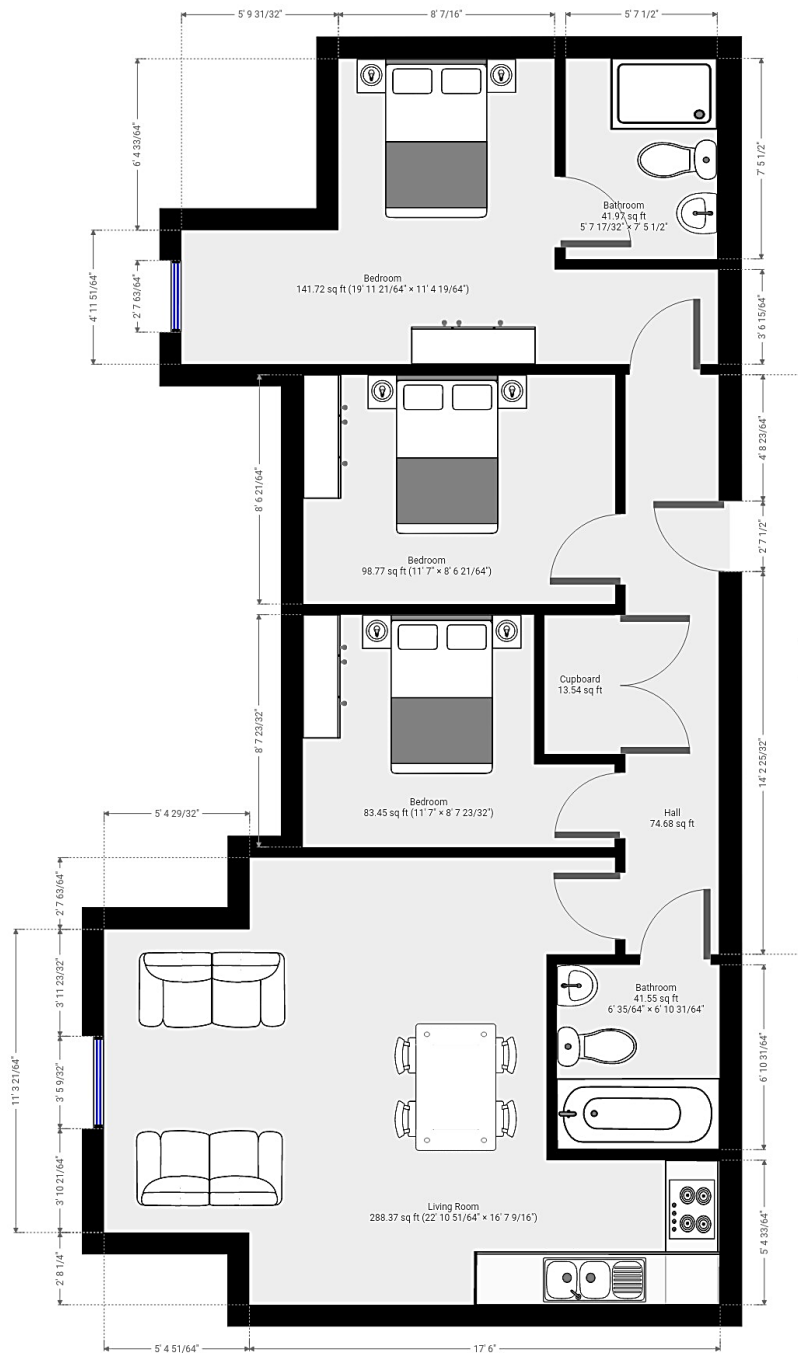
Also included within this contemporary furnished apartment are three sizable double bedrooms with the master leading on to its very own private ensuite bathroom with showering facilities. Furthermore, the property is also home to a full family sized bathroom as well as storage cupboard with a washer / dryer for your convenience.

The Riverside Wharf development has stood the test of time for more reasons than one. The development is 100% private with a high quality of finish throughout which is simply unrivalled locally. In close proximity are various local amenities inclusive of the M&S food hall, Sainsburys superstore and the locally renowned and highly fashionable EAT17 restaurant and food market filled with fresh produce and a vibrant atmosphere as well as the Port Jackson Wetherspoons built into the development itself. You certainly won't be short of things to see and do in Bishops Stortford.



Score	Energy rating	Current	Potential
92+	A		
81-91	B	83   B	83   B
69-80	C		
55-68	D		
39-54	E		
21-38	F		
1-20	G		

# Floor Plan



7 Riverside Walk, South Street, Bishop's Stortford, Herts CM23 3AG

Tel: 01279 654646

Email: [info@pm-estates.co.uk](mailto:info@pm-estates.co.uk)

[www.pm-estates.co.uk](http://www.pm-estates.co.uk)

PM Estates wish to advise prospective purchasers that we have not checked the services or appliances. The sales particulars have been prepared as a guide only; any floor-plan or map is for illustrative purposes only. PM Estates, for themselves and for the vendors or lessors of this property whose agents they are give notice that: the particulars have been produced in good faith; do not constitute any part of a contract; no person in the employment of PM Estates has any authority to make or give any representation of warranty in relation to this property.