



PM ESTATES

Property Sales & Lettings



Jackson Wharf

Bishops Stortford, Hertfordshire, CM23 3AX

£1,500PCM

Jackson Wharf

Bishops Stortford, Hertfordshire, CM23 3AX

Overview

- First Floor Apartment
- Two Double Bedrooms
- Fully Tiled Family Sized Bathroom
- En-Suite Shower Room
- Open-Plan Living Area
- Fully Fitted Kitchen
- Integrated Appliances
- Town Centre Location
- Offered Furnished
- Energy Rating: D
- Council Tax Band: C



Description

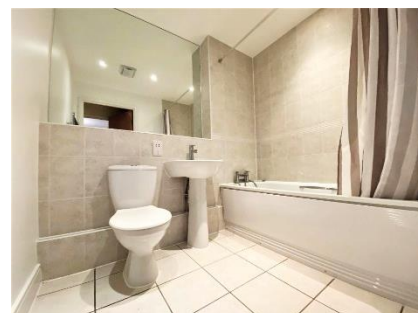
One of the rare dual aspect apartments located in the highly sought-after Jackson Wharf development that features a south facing and private balcony displaying direct river views.

This well-presented property remains sizeable throughout and has two double sized bedrooms the master has the luxury of an en-suite shower room as well as a fully tiled family sized bathroom.

This first-floor apartment has the added benefit of the large dual-aspect open plan living area which contains a fully fitted gloss coloured kitchen housing integrated appliances including a full-size dishwasher.

The development is surrounded by various local amenities which include bars, shops and restaurants including M&S Food hall, Starbucks Coffeshop and the ever-popular Snap Fitness 24/7 Gym Complex to name a few.

The development itself is a mere 2-minute walk to the mainline rail station, which offers direct services to London Liverpool Street, Stansted Airport and Cambridge, lending itself to city commuters and airport workers alike.



Score	Energy rating	Current	Potential
92+	A		
81-91	B		82 B
69-80	C	71 C	
55-68	D		
39-54	E		
21-38	F		
1-20	G		

