



PM ESTATES

Property Sales & Lettings



Riverside Wharf

Bishops Stortford, Hertfordshire, CM23 3GN

£1,100PCM

www.pm-estates.co.uk

Riverside Wharf

Bishops Stortford, Hertfordshire, CM23 3GN

Overview

- Second Floor Apartment
- Modern Interior Design
- One Double Bedroom
- Open Plan Living Area
- Fully Fitted High Gloss Kitchen
- Integrated Appliances
- Offered Furnished
- Town Centre Location
- Walking Distance to Rail Station
- Energy Rating B
- Council Tax Band B



Description

If you are looking for a modern contemporary living this apartment is the ideal choice. This one double bedroom apartment, situated within the sought-after Riverside Wharf Development, which is a convenient 5-minute walk (0.4miles) away from the mainline rail station offering direct services into London Liverpool Street, Stansted Airport and Cambridge City Centre.

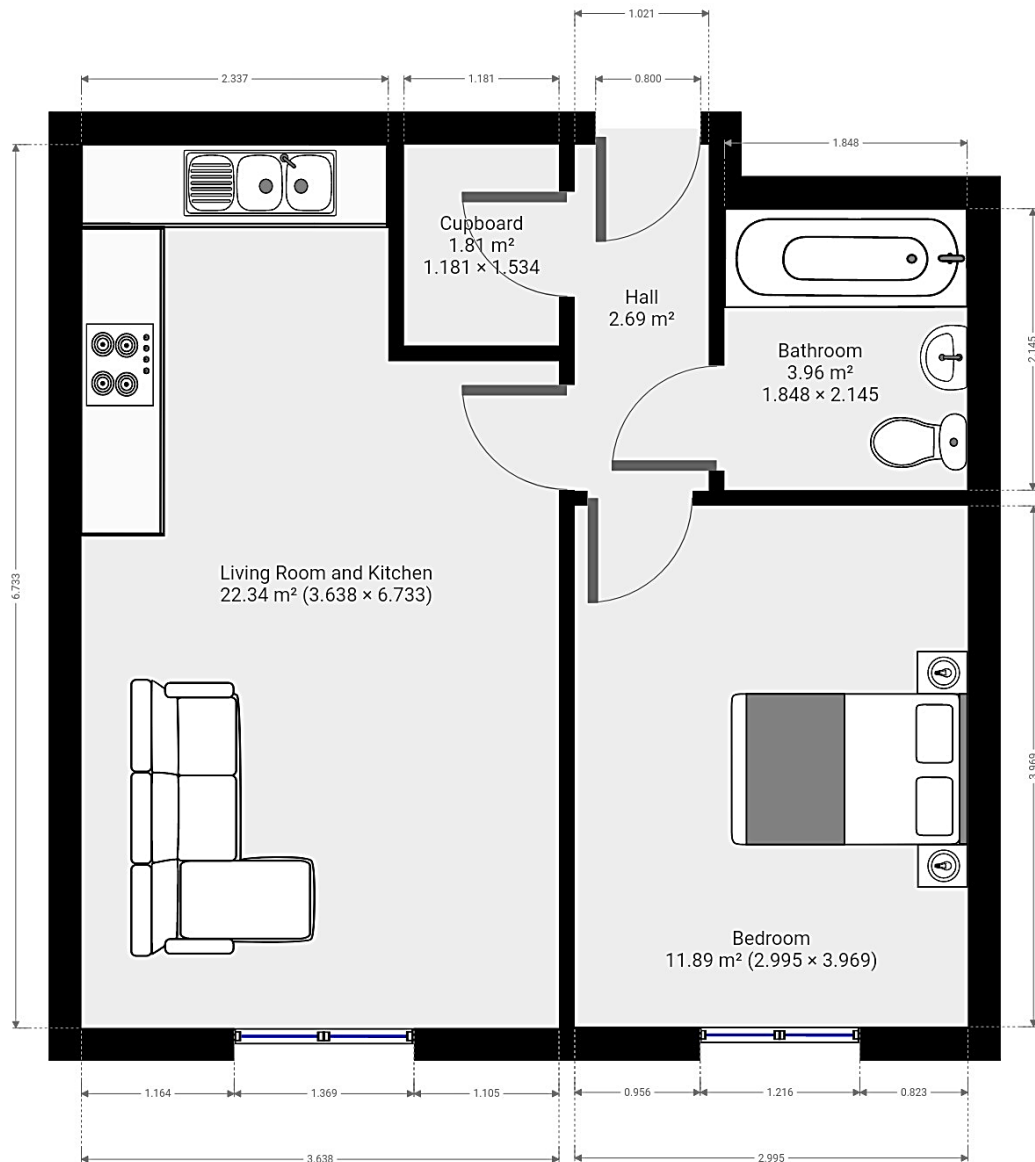
This beautifully finished property is complete with a black high gloss and fully fitted kitchen finish, which houses integrated appliances including a dishwasher. The open plan living area is complete with a feature tilt and turn picture window overlooking the developments private communal areas.

Riverside Wharf remains a popular residential development due to its town centre positioning as well as its quality of finish. The development is just a stones' throw away from various local amenities such as the locally renowned and highly fashionable EAT17 restaurant and food market filled with fresh produce and a vibrant atmosphere as well as the Port Jackson Wetherspoons just a short 2-minute walk away.



Score	Energy rating	Current	Potential
92+	A		
81-91	B	81 B	82 B
69-80	C		
55-68	D		
39-54	E		
21-38	F		
1-20	G		

Floor Plan



7 Riverside Walk, South Street, Bishop's Stortford, Herts CM23 3AG

Tel: 01279 654646

Email: info@pm-estates.co.uk

www.pm-estates.co.uk

PM Estates wish to advise prospective purchasers that we have not checked the services or appliances. The sales particulars have been prepared as a guide only; any floor-plan or map is for illustrative purposes only. PM Estates, for themselves and for the vendors or lessors of this property whose agents they are give notice that: the particulars have been produced in good faith; do not constitute any part of a contract; no person in the employment of PM Estates has any authority to make or give any representation of warranty in relation to this property.

P820

www.pm-estates.co.uk