



Red Lion Court

Bishops Stortford, Hertfordshire, CM23 3YL

£1,150PCM

Red Lion Court

Bishops Stortford, Hertfordshire, CM23 3YL

Overview

- Ground Floor Apartment
- Newly Refurbished
- Modern Interior Design
- Fitted Kitchen with Appliances
- Family Sized Bathroom
- One Double Bedroom
- Close Proximity to Mainline Train Station
- Allocated Parking Space
- Offered Unfurnished
- Access to Communal Gardens
- Energy Rating E
- Council Tax Band B



Description

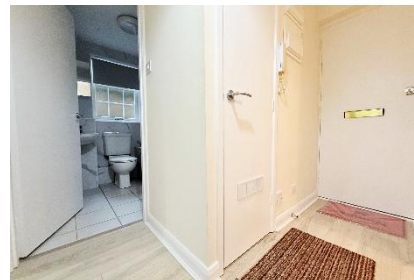
PM Estates are proud to present this newly refurbished one-bedroom ground floor apartment within the popular Red Lion Court Development, situated with the town centre of Bishops Stortford,

Finished in a modern style, the property benefits from an upgraded kitchen with appliances, a recently updated bathroom with bath and shower facilities, along with new decoration throughout. Offered in immaculate condition, this apartment provides stylish, low-maintenance living, perfect for professionals seeking convenience and quality in a prime town centre location.

The Red Lion Court Development is within walking distance to the mainline rail station which offers direct services to London Liverpool Street, Stansted Airport and Cambridge City Centre. This property also benefits from one allocated parking bay within the development.

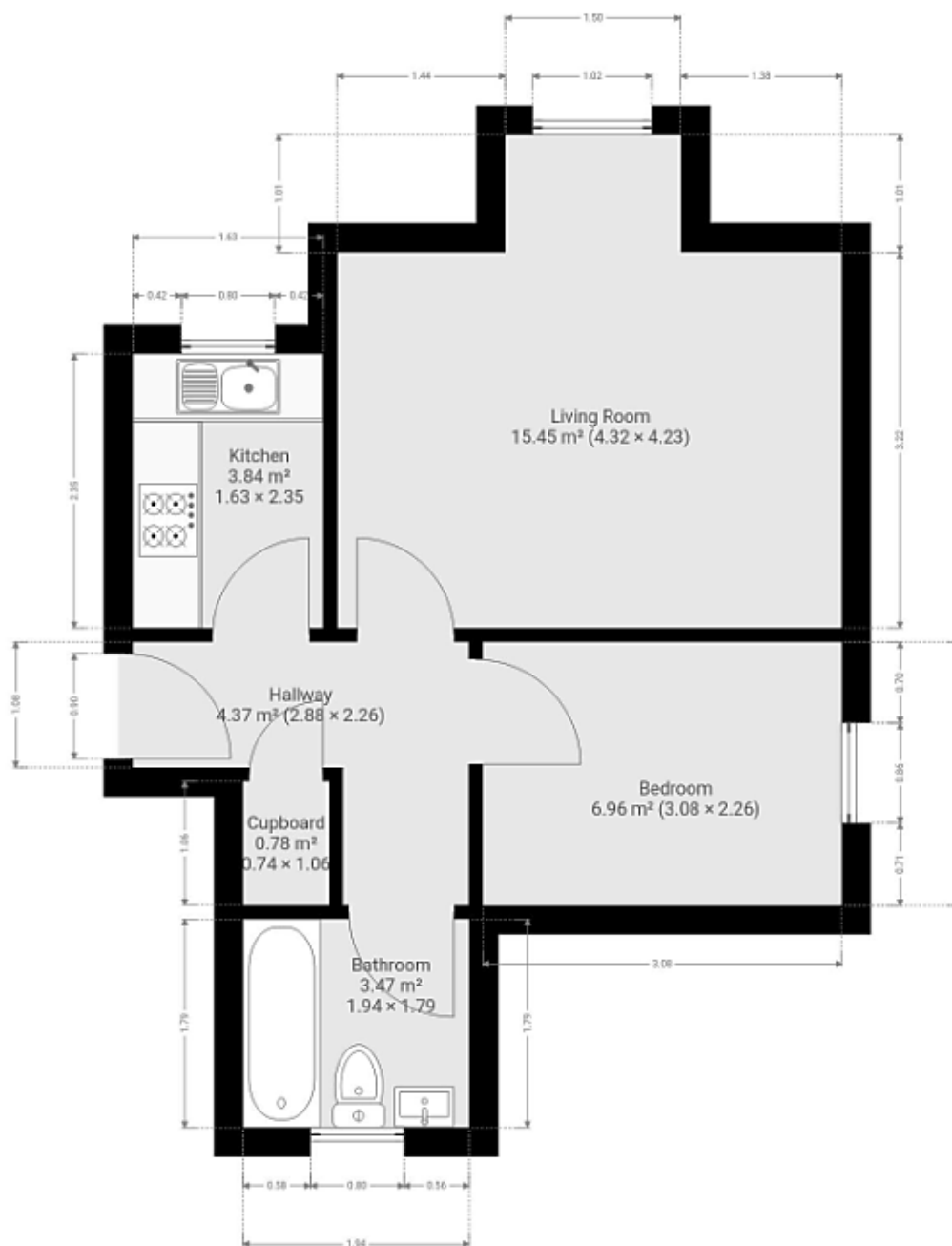
The development is also just a stone's throw away from many of the town's amenities inclusive of the Nuffield Health Gym Complex, and Sainsbury's superstore, along with many high street named brands.

Call us today to book your viewing appointment on 01279 654646



Score	Energy rating	Current	Potential
92+	A		
81-91	B		
69-80	C		74 C
55-68	D		
39-54	E	40 E	
21-38	F		
1-20	G		

Floor Plan



7 Riverside Walk, South Street, Bishop's Stortford, Herts CM23 3AG

Tel: 01279 654646

Email: info@pm-estates.co.uk

www.pm-estates.co.uk

PM Estates wish to advise prospective purchasers that we have not checked the services or appliances. The sales particulars have been prepared as a guide only; any floor-plan or map is for illustrative purposes only. PM Estates, for themselves and for the vendors or lessors of this property whose agents they are give notice that: the particulars have been produced in good faith; do not constitute any part of a contract; no person in the employment of PM Estates has any authority to make or give any representation of warranty in relation to this property.

P820

www.pm-estates.co.uk